



# Electrolux

## Standard Preparation 700 mm Cupboard Sink with 1 Bowl & 1 Door

ITEM # \_\_\_\_\_  
MODEL # \_\_\_\_\_  
NAME # \_\_\_\_\_  
SIS # \_\_\_\_\_  
AIA # \_\_\_\_\_



Standard Preparation

700 mm Cupboard Sink with 1 Bowl & 1 Door

132701 (MLA716P)

Cupboard sink with 1 bowl  
600x500mm and 1 hinged  
door, 700mm

### Short Form Specification

#### Item No.

Made entirely from stainless steel. Inner welded frame in stainless steel. Unique connection of panels to inner frame. The 50mm high worktop in 304 AISI stainless steel, 1mm in thickness, incorporates a layer of sound deadening material and has upturned edges. Upstand (h=100mm) with 8mm rounded edge. Sound-deadened hinged door. Base panel in 304 AISI stainless steel and height-adjustable intermediate shelf. Sink bowl in 304 AISI stainless steel with overflow pipe and drain hole. Mounted on feet, adjustable in height.

### Main Features

- Model complies with international hygiene and cleanability standards.
- Ideal for central positioning in the kitchen, either as island installation or back to back.

### Construction

- Inner welded frame in stainless steel to guarantee superior strength and stability.
- Easy access to the cupboard interior on all lengths guaranteed by the use of only 2 doors.
- Sink bowl in 304 AISI stainless steel, supplied with overflow drain pipe and drain hole.
- 50 mm worktop in 304 AISI stainless steel with upturned edges, incorporates an 18 mm layer of sound deadening material.
- Reinforced side and base panel in 304 AISI stainless steel.
- 100 mm upstand with 8 mm radiused corner and 13 mm deep, designed to be used against a wall.
- Equipped with intermediate shelf which can be positioned at three different heights.
- All edges are upturned for better safety.
- 304 AISI stainless steel feet, 200 mm high and 54 mm in diameter, adjustable by -50/+30 mm.
- Heavy duty Stainless steel construction.

### Optional Accessories

- Double plastic drain syphon 2 " for sinks PNC 850022 ☐
- Mixer tap with spray, spout, short lever and thermostat, double hole PNC 855307 ☐
- Wall mixer tap with swivel spout 3/4" PNC 855310 ☐
- Prewash spray unit, single hole PNC 855315 ☐
- Mixer tap with spout, foot pedal operated for sinks on legs PNC 855317 ☐
- Mixer tap with swivel spout 3/4", single hole PNC 855319 ☐
- Elbow operated mixer tap with spout 3/4", single hole PNC 855322 ☐
- Elbow operated tap with spray arm and spout, single hole PNC 855324 ☐
- Infrared mixer tap with spout 3/4", single hole PNC 855325 ☐
- HD mixer tap with spray arm 3/4", single hole PNC 855326 ☐
- Foot operated mixer tap (hot and cold) with spout 3/4" PNC 855328 ☐
- Overflow filter for 500x500mm bowl for Standard range PNC 895136 ☐
- False bottom for right hand 500x500mm bowl for Standard range PNC 895200 ☐

APPROVAL: \_\_\_\_\_



Electrolux

Standard Preparation  
700 mm Cupboard Sink with 1 Bowl & 1 Door



**Electrolux**

**Standard Preparation  
700 mm Cupboard Sink with 1 Bowl  
& 1 Door**

- False bottom for left hand 500x500mm bowl for Standard range PNC 895210  
☐
- Single plastic drain syphon 2" for sinks PNC 895313  
☐
- Single brass drain syphon 2" for sinks PNC 895314  
☐

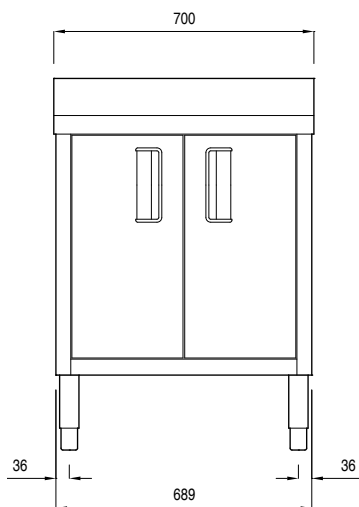


**Standard Preparation  
700 mm Cupboard Sink with 1 Bowl & 1 Door**

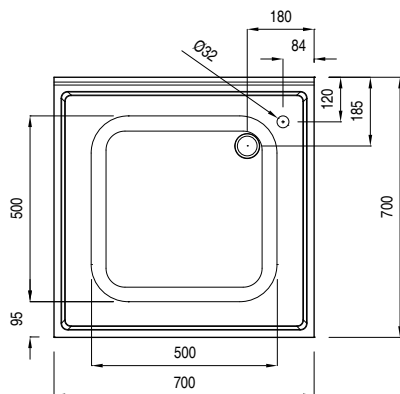
The company reserves the right to make modifications to the products without prior notice. All information correct at time of printing.

2015.06.03

Front

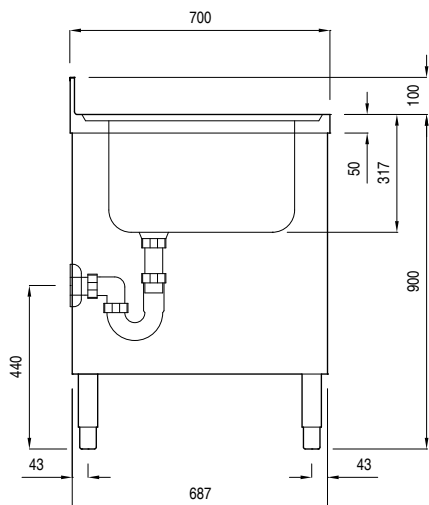


Top



D = Drain  
EQ = Equipotential screw

Side



#### Key Information:

Cabinet width:	
132701 (MLA716P)	610 mm
Cabinet depth:	645 mm
Cabinet height:	330 mm
External dimensions, Height:	1000 mm
External dimensions, Width:	700 mm
External dimensions, Depth:	700 mm
Upstand Dimensions, Height:	100 mm
Upstand Dimensions, Depth:	13 mm
Upstand Dimensions, Radius:	R=8 mm
Bowls number	1
Bowl dimensions	500x500xH300
Number and type of doors:	2Hinged
Worktop thickness:	50 mm
Net weight:	40 kg