



Electrolux

Modular Cooking Range Line Pasta Cooker, gas, 10.5gal

ITEM # _____

MODEL # _____

NAME # _____

SIS # _____

AIA # _____



Electrolux



Modular Cooking Range Line

Pasta Cooker, gas, 10.5gal

391201 (E9PCGD1MF2)

(E9PCGD1MF2) Pasta Cooker, gas, (1) 10.5 gallon tank, automatic starch removal, automatic low water level control, 9 position energy control, 316 stainless steel tank, stainless steel cabinet & legs, 120v/60/1-ph, 0.9 amps, 47,726 BTU

Short Form Specification

Item No.

E9PCGD1MF2 Pasta Cooker, gas, (1) 10.5 gallon tank, 66lb/hour capacity, automatic starch removal, automatic low water level control, 9 position energy control, 316 stainless steel tank, stainless steel cabinet & legs, 120V/60/1-ph, 0.9 amps, 47,726 BTU



APPROVAL: _____

Main Features

- In addition to cooking pasta, the appliance can be used for noodles of every kind, rice, dumplings and vegetables.
- High efficiency 16.5 kW burners in stainless steel with flame failure device and power settings for each well, located below the well.
- Water basin in 316-L type Stainless steel.
- Water basin is seamlessly welded into the top of the appliance.
- Provided with integrated drip zone on which baskets can be placed for draining purposes.
- 40 liters water basin.
- Automatic starch removal function during cooking: improved water quality over time.
- Automatic low-water level shut-off: no accidental over-heating.
- Easy-to-use control panel with gas cock and piezo ignition.
- All major compartments located in front of unit for ease of maintenance.
- Continuous water filling regulated through a manual water tap.
- Large drain with manual ball-valve for fast emptying of well.
- Thermocouple device for added safety.
- IPX5 water resistance certification.
- The special design of the control knob system guarantees against water infiltration.
- One piece pressed 0.07" (2mm) work top in Stainless Steel.
- Unit delivered with four 2" (50mm) legs in stainless steel as standard (all round Stainless steel kick plates as option).

Construction

- All exterior panels in Stainless Steel with Scotch Brite finishing.
- Model has right-angled side edges to allow flush fitting joints between units, eliminating gaps and possible dirt traps.

Included Accessories

- 1 of Door for open base cupboard PNC 206350

Optional Accessories

- Air-draft diverter, 4 23/32" diam. PNC 206126 ☐
- Matching ring for flue condenser, 4 23/32" diam. PNC 206127 ☐
- Kit of 4 wheels (2 swivelling with brake) for open gas burner ranges, convection oven bases, fryers, pasta cookers and EMPower open cupboards PNC 206135 ☐

Electrolux Professional, Inc.

www.electroluxusa.com/professional

10200 David Taylor Drive, Charlotte, NC 28262 • Telephone Number: 866-449-4200 • Fax Number: 704-547-7401

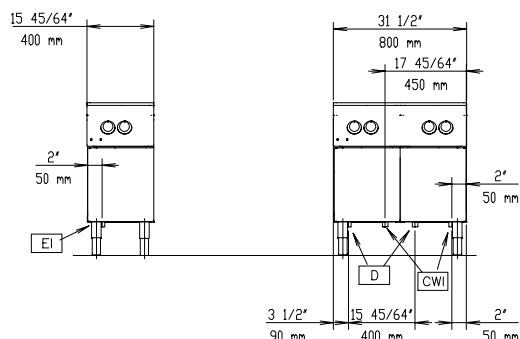
Modular Cooking Range Line
Pasta Cooker, gas, 10.5gal

- Flanged feet kit PNC 206136 ☐
- Lid and lid holder for 10.5 gallon pasta cooker PNC 206190 ☐
- Water column with swivel arm (water column extension not included) PNC 206289 ☐
- Chimney upstand, 16" (400mm) PNC 206303 ☐
- Flue condenser for 1/2 module, 120 mm diameter PNC 206310 ☐
- Energy saving device for pasta cookers PNC 206344 ☐
- Door for open base cupboard PNC 206350 ☐
- Base support assembly 16" (400 mm) wide for installation on wheels. To be used with PNC 206366 ☐
- CHIMNEY GRID NET, 400MM-700&900LINE PNC 206400 ☐
- Side handrail-right/left hand PNC 216044 ☐
- FRONTAL HANDRAIL 400 MM PNC 216046 ☐
- FRONTAL HANDRAIL 800 MM PNC 216047 ☐
- FRONTAL HANDRAIL 1200 MM PNC 216049 ☐
- FRONTAL HANDRAIL 1600 MM PNC 216050 ☐
- 2 side covering panels for free standing appliances PNC 216134 ☐
- Large handrail - portioning shelf, W=15 3/4" PNC 216185 ☐
- Large handrail - portioning shelf, W=31 1/2" PNC 216186 ☐
- 3 baskets (11" x 6") for 10.5 gallon pasta cooker PNC 927210 ☐
- 2 baskets (11" x 9") for 10.5 gallon pasta cooker PNC 927211 ☐
- 6 single-portion baskets, round - requires support rack for 10.5 gallon pasta cooker (PNC 927219 or 960644) PNC 927213 ☐
- Basket (11" x 18") for 10.5 gallon pasta cooker PNC 927216 ☐
- Support rack for baskets of 10.5 gallon pasta cooker PNC 927219 ☐

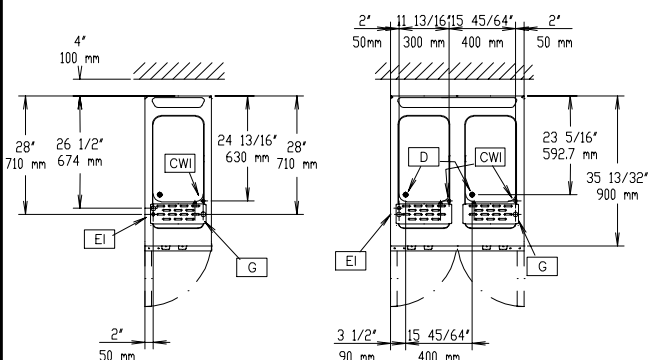


Modular Cooking Range Line Pasta Cooker, gas, 10.5gal

Front

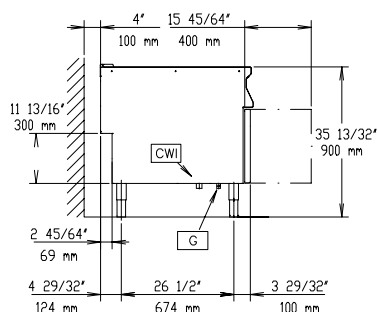


Top



- D = Drain
EI = Electrical connection
EQ = Equipotential screw
G = Gas connection

Side



Gas

Gas Power:

391201 (E9PCGD1MF2) 53000 Btu/hr (15.5 kW)

Gas Type Option:

LPG; Natural Gas

Gas Inlet:

3/4"

Natural gas - Pressure:

7" w.c. (17.4 mbar)

LPG Gas Pressure:

11" w.c. (27.7 mbar)

Water:

Drain "D":

1"

Incoming Cold/hot Water line size:

1/2"

Total hardness:

5-50 ppm

Electrolux recommends the use of treated water, based on testing of specific water conditions.

Please refer to user manual for detailed water quality information.

Key Information:

Usable well dimensions

(width): 11 13/16" (300 mm)

Usable well dimensions

(depth): 20 1/2" (520 mm)

Usable well dimensions

(height): 10 1/4" (260 mm)

Well capacity: 8.45 gal (32 liters) MIN;
10.57 gal (40 liters) MAX

Well Capacity (MAX):

10.57 gal (40 litres) MAX

External dimensions, Width:

15 3/4" (400 mm)

External dimensions, Depth:

35 7/16" (900 mm)

External dimensions, Height:

33 7/16" (850 mm)

Net weight:

137 lbs (62 kg)

Shipping width:

18 1/8" (460 mm)

Shipping depth:

40 3/16" (1020 mm)

Shipping height:

44 1/16" (1120 mm)

Shipping weight:

170 lbs (77 kg)

Shipping volume:

18.56 ft³ (0.53 m³)

If appliance is set up or next to or against temperature sensitive furniture or similar, a safety gap of approximately 150 mm should be maintained or some form of heat insulation fitted.