



Electrolux

Standard Preparation 800x500 mm Soaking Sink with 2 Bowls

ITEM # _____
MODEL # _____
NAME # _____
SIS # _____
AIA # _____



Electrolux

Standard Preparation
800x500 mm Soaking Sink with 2 Bowls



Standard Preparation

800x500 mm Soaking Sink with 2 Bowls

132338 (VLP1802SP)

Soaking sink unit with 2
bowls 810x540x350mm,
1800mm

Short Form Specification

Item No.

Made from 304 AISI stainless steel. The 50mm high worktop in 304 AISI stainless steel, 1mm in thickness, has an overflow rim. Integral radiused rear upstand, h=100mm. All-round apron. Square section legs 40x40mm on 1 " height-adjustable feet.

N.2 bowls with overflow pipe, filter and drain hole.

Main Features

- Model complies with international hygiene and cleanability standards.
- Soaking tank can be supplied upon request with different tap units and with syphons in plastic or brass.

Construction

- 50 mm worktop in 304 AISI stainless steel, 10/10 in thickness with overflow rim along the top.
- 100 mm upstand with 8 mm radiused corner and 13 mm deep, designed to be used against a wall.
- Square section legs and 40 mm height-adjustable feet in 304 AISI stainless steel.
- Sink tops easily slotted onto the legs and taps are easily installed from the rear.
- 350 mm high bowl and pan washing support constructed entirely in 304 AISI stainless steel.
- Bowl with rounded internal corners supplied as standard with an overflow pipe with filter and a drain hole. Bowl base inclined towards the drain outlet.

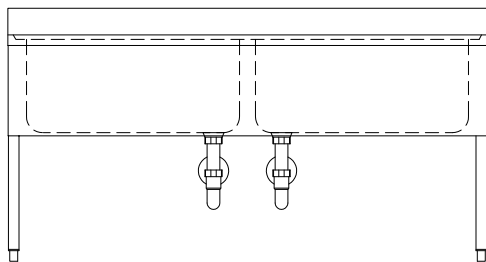
Optional Accessories

- Double plastic drain syphon 2 " for sinks PNC 850022 ☐
- Elbow operated mixer tap 3/4" PNC 855302 ☐
- Elbow operated tap with spray arm and spout PNC 855304 ☐
- Mixer tap with spray, spout, short lever and thermostat, double hole PNC 855307 ☐
- Wall mixer tap with swivel spout 3/4" PNC 855310 ☐
- Mixer tap with spray arm 3/4" PNC 855311 ☐
- Prewash spray unit, single hole PNC 855315 ☐
- Mixer tap with spout, foot pedal operated for sinks on legs PNC 855317 ☐
- Mixer tap with swivel spout 3/4", single hole PNC 855319 ☐
- Maxi reel retractable hose spray unit, 10m PNC 855320 ☐
- Maxi reel retractable hose spray unit, 15m PNC 855321 ☐
- Elbow operated mixer tap with spout 3/4", single hole PNC 855322 ☐
- Elbow operated tap with spray arm and spout, single hole PNC 855324 ☐
- Infrared mixer tap with spout 3/4", single hole PNC 855325 ☐
- HD mixer tap with spray arm 3/4", single hole PNC 855326 ☐
- Maxi reel retractable hose spray unit, 6m PNC 855327 ☐

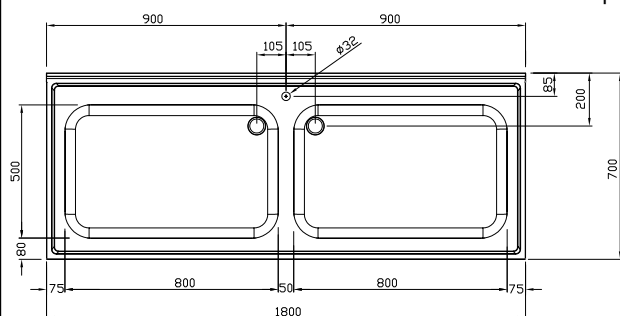
APPROVAL: _____

- Foot operated mixer tap (hot and cold) with spout 3/4" ☐ PNC 855328
- Mixer tap with spray and spout 3/4", single hole ☐ PNC 855329
- Lower shelf for 1800mm sink on legs ☐ PNC 855348
- Single plastic drain syphon 2" for sinks ☐ PNC 895313
- Single brass drain syphon 2" for sinks ☐ PNC 895314

Front

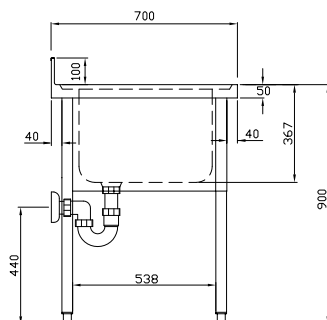


Top



D = Drain
EQ = Equipotential screw

Side



Key Information:

External dimensions, Height:	132338 (VLP1802SP)	1000 mm
External dimensions, Width:		1800 mm
External dimensions, Depth:		700 mm
Upstand Dimensions, Height:		100 mm
Upstand Dimensions, Depth:		13 mm
Upstand Dimensions, Radius:		R=8 mm
Bowls number		2
Bowl dimensions		800x500xH350
Worktop thickness:		50 mm
Net weight:		72 kg