



# Electrolux

## Standard Preparation 1800 mm Vegetable Processing/ Washing Table

ITEM # \_\_\_\_\_

MODEL # \_\_\_\_\_

NAME # \_\_\_\_\_

SIS # \_\_\_\_\_

AIA # \_\_\_\_\_



Electrolux

Standard Preparation  
1800 mm Vegetable Processing/Washing Table



Standard Preparation

1800 mm Vegetable Processing/Washing Table

132319 (TLV1810P)

Vegetable processing and washing table with polythene cutting board, 1670x320x180 mm bowl, scraping hole and upstand 1800mm

### Short Form Specification

#### Item No.

50mm high worktop in 304 AISI stainless steel, 1mm in thickness. Integral radiused rear upstand, h=100mm. All-round apron. Square section legs 40x40mm on 1" height-adjustable feet in 304 AISI stainless steel. Bowl with overflow pipe and drain hole.

N.2 polythene cutting boards on front and waste scraping hole.

### Main Features

- Model complies with international hygiene and cleanability standards.

### Construction

- Table can be equipped with a mobile bin with lid for waste disposal (optional accessory).
- 100 mm upstand with 8 mm radiused corner and 13 mm deep, designed to be used against a wall.
- 50 mm worktop in 304 AISI stainless steel, 10/10 in thickness with upturned edges and reinforced waterproof underpanel, incorporates a layer of sound deadening materials.
- Square section legs and 40 mm height-adjustable feet in 304 AISI stainless steel.
- Unit features an all-round apron, a 1670 x 320 x 180 mm bowl, a scraping hole and two 730 x 230 x 25 mm polythene cutting board. The bowl is supplied with an overflow pipe and a drain hole.

### Optional Accessories

- Stainless steel 60-lt mobile bin with lid PNC 120131 ☐
- Elbow operated tap with spray arm and spout PNC 855304 ☐
- Elbow operated mixer tap with short lever 3/4" PNC 855305 ☐
- Single plastic drain syphon 1,5" for work tables with bowl PNC 855306 ☐
- Mixer tap with spray, spout, short lever and thermostat, double hole PNC 855307 ☐
- Single brass drain syphon 1,5" for work tables with bowl PNC 855308 ☐
- Wall mixer tap with swivel spout 3/4" PNC 855310 ☐
- Mixer tap with spray arm 3/4" PNC 855311 ☐
- Prewash spray unit, single hole PNC 855315 ☐
- Mixer tap with spout, foot pedal operated for sinks on legs PNC 855317 ☐
- Mixer tap with swivel spout 3/4", single hole PNC 855319 ☐
- Elbow operated mixer tap with short spout 3/4", single hole PNC 855323 ☐
- Elbow operated tap with spray arm and spout, single hole PNC 855324 ☐
- Infrared mixer tap with spout 3/4", single hole PNC 855325 ☐
- HD mixer tap with spray arm 3/4", single hole PNC 855326 ☐
- Foot operated mixer tap (hot and cold) with spout 3/4" PNC 855328 ☐
- Mixer tap with spray and spout 3/4", single hole PNC 855329 ☐

APPROVAL: \_\_\_\_\_



**Electrolux**

**Standard Preparation  
1800 mm Vegetable Processing/  
Washing Table**

- Lower shelf for 1800mm sink on legs PNC 855348 ☐

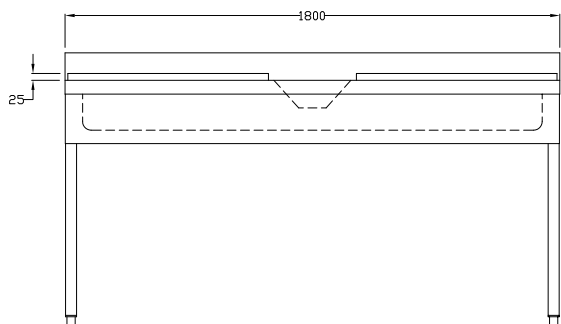


**Standard Preparation  
1800 mm Vegetable Processing/Washing Table**

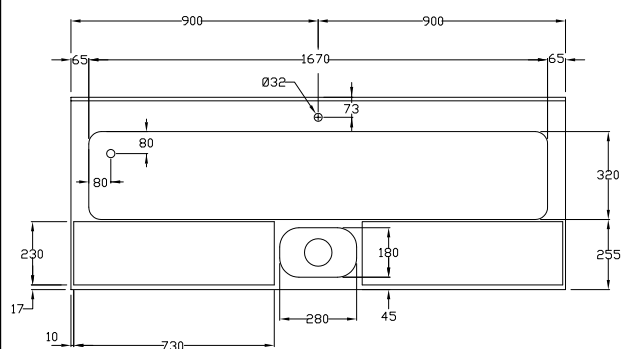
The company reserves the right to make modifications to the products without prior notice. All information correct at time of printing.

2015.03.20

Front

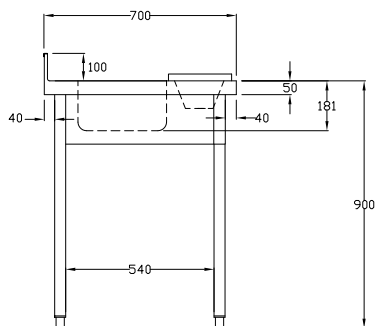


Top



D = Drain  
EQ = Equipotential screw

Side



## Key Information:

External dimensions, Height:	
132319 (TLV1810P)	1000 mm
External dimensions, Width:	1800 mm
External dimensions, Depth:	700 mm
Upstand Dimensions, Height:	100 mm
Upstand Dimensions, Depth:	13 mm
Upstand Dimensions, Radius:	R=8 mm
Bowls number	1
Bowl dimensions	1670x320xH180
Number of cutting boards	1
Cutting board dimensions - width	810 mm
Cutting board dimensions - depth	230 mm
Cutting board dimensions - height	25 mm
Worktop thickness:	50 mm
Net weight:	60 kg