



Electrolux

Crosswise Convection Electric Convection Oven, 6 GN1/1 - 60Hz

ITEM # _____

MODEL # _____

NAME # _____

SIS # _____

AIA # _____



Electrolux



Crosswise Convection

Electric Convection Oven, 6 GN1/1 - 60Hz

260726 (FCE06160)

Electric convection oven
6x1/1GN, crosswise

Short Form Specification

Item No. _____

Main structure in stainless steel, with seamless joints in the oven cavity. Door with tempered glass. Cavity lighting. Unique air-flow channel system.

Cooking cycles: air convection, convection with 5 stage humidification. Max. temperature of 300°C.

Functional level: base, manual.

"Cross-wise" pan rack, 60 mm pitch, suitable for 6x1/1GN.

Main Features

- IPX4 water resistance certification.
- Racks can be easily removed without the need for special tools.
- Unique air-flow system guarantees perfect distribution of heat throughout the oven cavity.
- Maximum temperature of 300°C.
- Food temperature probe available as accessory.
- Rapid cooling of oven cavity.
- Halogen lighting and "crosswise" pan supports allow clear and unobstructed view of the products being cooked.
- 5 Stage humidification control, to ensure perfect pastries and succulent roasts.
- Meets the requirements of CE, VDE and DVGW for safety.

Construction

- Height adjustable feet.
- Access to all components from the front.
- Stainless steel oven cavity with rounded corners.
- External access door for electrical connections.
- All connections made on the left side below the oven.
- Integrated drain outlet.

APPROVAL: _____

Optional Accessories

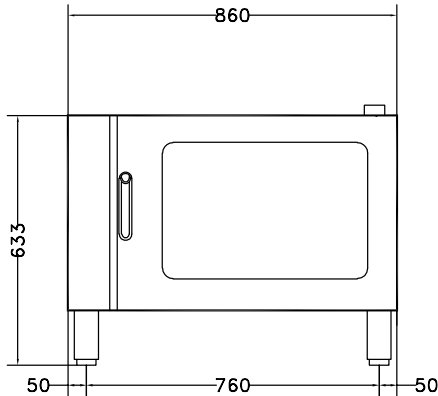
- Kit for stacking 6x1/1GN convection oven and 15kg blast chillers and blast chiller&freezers PNC 881528 ☐
- Pair of 1/1GN AISI 304 stainless steel grids PNC 921101 ☐
- Support for 1/2GN pan (2pcs) PNC 921106 ☐
- Automatic water softener for ovens PNC 921305 ☐
- Resin sanitizer for water softener PNC 921306 ☐
- Probe for ovens 6 and 10x1/1GN PNC 921702 ☐
- Guide kit for 1/1GN drain pan PNC 921713 ☐
- Couple of grids for whole chicken 1/1GN (8 per grid) PNC 922036 ☐
- Base for oven 6x1/1GN PNC 922101 ☐
- Shelf guides for 6x1/1GN, ovens base PNC 922105 ☐
- Feet for ovens 6x1/1GN, 10x1/1 and 2/1GN PNC 922127 ☐
- Retractable hose reel spray unit PNC 922170 ☐
- Side external spray unit (needs to be mounted outside and includes support for mounting to oven) PNC 922171 ☐
- Fat filter for 6x1/1GN PNC 922177 ☐
- 2 frying baskets for ovens PNC 922239 ☐
- Grid for whole chicken 1/1GN (8 per grid - 1,2kg each) PNC 922266 ☐
- Kit universal skewer rack and 6 short skewers for Lengthwise and Crosswise ovens PNC 922325 ☐
- Universal skewer rack PNC 922326 ☐
- Smoker for lengthwise and crosswise ovens - 4 kinds of smoker wood chips are available on request PNC 922338 ☐



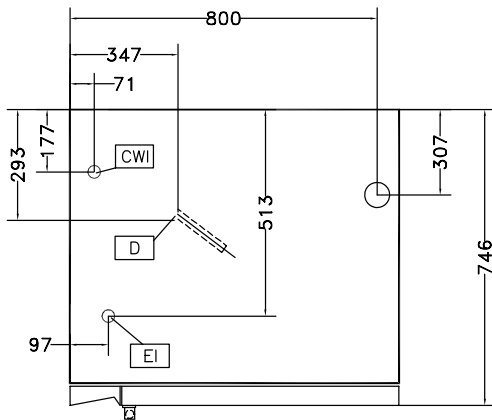
Electrolux

Crosswise Convection Electric Convection Oven, 6 GN1/1 - 60Hz

Front

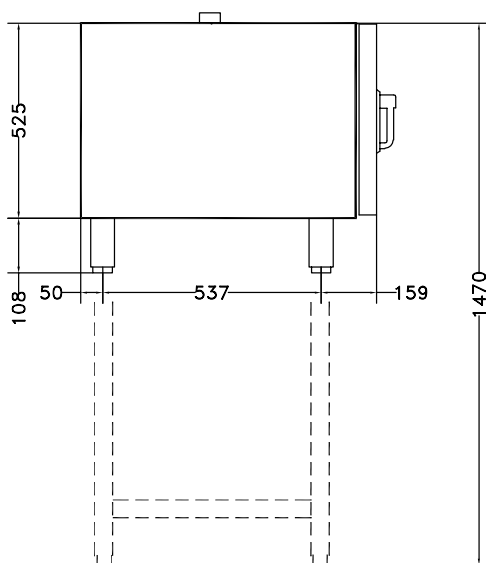


Top



- CWI1 = Cold Water inlet 1
CWI2 = Cold Water Inlet 2
D = Drain
EI = Electrical connection

Side



Electric

Supply voltage:

260726 (FCE06160) 400 V/3N ph/60 Hz

Electrical power max.:

7.7 kW

Capacity:

Shelf capacity:

6

Key Information:

External dimensions, Height: 633 mm

External dimensions, Width: 860 mm

External dimensions, Depth: 746 mm

Net weight: 79.5 kg

Functional level: Basic

Type of grids: 1/1 Gastronorm

Runners pitch: 60 mm

Cooking cycles - air-convection: 300 °C

Heating-up time (hot air cycle): 215°C / 300s.



Crosswise Convection
Electric Convection Oven, 6 GN1/1 - 60Hz

The company reserves the right to make modifications to the products without prior notice. All information correct at time of printing.

2016.09.30