



# Electrolux

## Standard Preparation Hand Wash Basin - Wall Mounted

ITEM # \_\_\_\_\_  
MODEL # \_\_\_\_\_  
NAME # \_\_\_\_\_  
SIS # \_\_\_\_\_  
AIA # \_\_\_\_\_



Standard Preparation

Hand Wash Basin - Wall Mounted

154000 (HWSW45)

Wall mounted hand wash basin, knee-operated, with 1 bowl (340x365x155mm), mixer spout and drain hole

### Short Form Specification

Item No. \_\_\_\_\_

Made from 304 AISI stainless steel. Integral radiused rear upstand. Knee-operated by pressing on front panel.

Bowl mm340x365x155h with mixer spout and drain hole.

### Main Features

- Model complies with international hygiene and cleanability standards.
- Steel foot and knee pedals make the handwashing basin extremely easy to use.
- Easy to clean thanks to the rounded bowl and corners.
- Washbasin can be equipped with a wall panel plus paper and soap dispensers as optional extras.

### Construction

- Mixer spout, ½" in diameter and drain hole supplied as standard.
- Constructed entirely in 18/10 stainless steel.
- Sound deadened pressed bowl with rounded corners and all-round lip to prevent overspill.
- Rear upstand 30 mm in height and 1.5 mm thick.
- Syphon included in the delivery.

### Optional Accessories

- Wall knife sanitizer for 8-12 knives PNC 850404 ☐
- Stainless steel fitting wall with detergent and napkins dispenser for PNC 850406 ☐  
hand wash basins codes 154000, 154001 and 154002

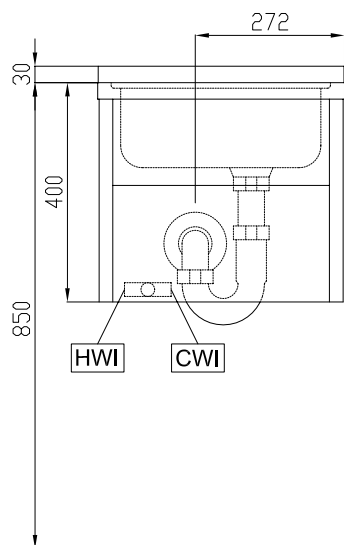
APPROVAL: \_\_\_\_\_



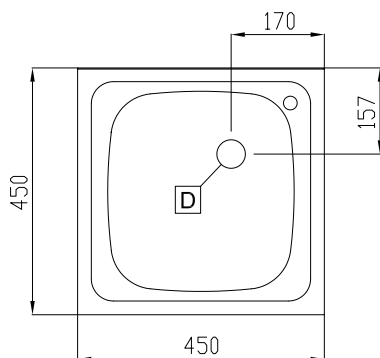
Electrolux

Standard Preparation  
Hand Wash Basin - Wall Mounted

Front

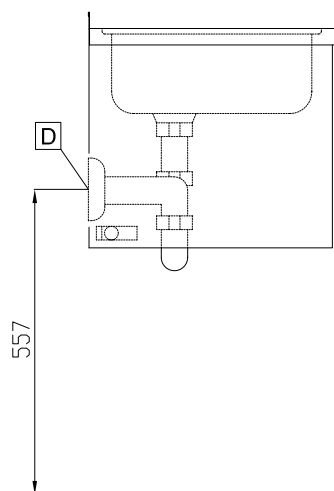


Top



CWI = Cold Water inlet  
D = Drain  
EQ = Equipotential screw  
HWI = Hot water inlet

Side



### Water:

Water drain outlet size:

154000 (HWSW45) 1 1/2"

Incoming Hot Water line size: 1/2"

Incoming Cold Water line size: 1/2"

### Key Information:

External dimensions, Height: 400 mm

External dimensions, Width: 450 mm

External dimensions, Depth: 450 mm

Upstand Dimensions, Height: 30 mm

Upstand Dimensions, Depth: 1.5 mm

Upstand Dimensions, Radius: 90° mm

Bowls number 1

Bowl dimensions 340x365xH155

Worktop thickness: 30 mm

Net weight: 12 kg