



Project: _____

Location: _____

Item #: _____ Quantity: _____

Model #: _____

MODEL: **IDC-VCO15**

PASTRY DISPLAY CASES – Combo Series

General Strengths

- ✓ **Control systems.** Higher precision in managing temperature settings. The ability to adjust temperature ranges to meet end user's requirements.
- ✓ **100% Tested.** All condenser units are 100% tested in helium chambers in order to detect refrigeration leaks.
- ✓ **Certified.** Audited and Certified by INTERTEK for compliance with UL 471 and NSF 7. AENOR audited and certified by internationally recognized firm. ISO 9001:2008 (Quality); ISO 14001:2004 (Environmental); OSHAS 18001:2007 (Prevention and Worker Safety)
- ✓ **Lighting.** Interior cabinet includes LED lighting, for brighter lighting and energy efficiency. LED saves 90% more energy compared to traditional fluorescent bulbs. Considerably increases product visibility.



Revision: 01 Date: 04/03/2017 IDC-VCO15_FT_62_1

MODEL	Dimensions (inches) (mm)			Sides	Shelving	Ref.	Refrig. Amount (Lbs.) (gr.)	Temp. Range (°F) (°C)	Capacity (Cu. Ft.) (L)	Cond. Unit. H.P.	Case Amps	Crated Weight (Lbs.) (Kg.)
	W	D	H									
IDC-VCO15	61-1/2 1562	35 810	57-1/4 1455	1-1/16+1-3/16 30+30	1	R404A	0.99 450	35°F / 41°F +2°C/+5°C	11.79 334	7/8	12.2	529 240

ETL LISTED TO UL471 STANDARD AND SANITATION CLASSIFIED TO NSF7 – WE RESERVE THE RIGHT TO CHANGE SPECIFICATIONS WITHOUT PRIOR NOTICE



Infrico USA Corp.
1409 N.W. 84th Avenue
Doral, FL 33126
1.305.777.9599 Office
1.305.777.9598 Fax

www.infrico.us
service@infrico.com

APPROVALS: _____ AVAILABLE AT: _____

Follow us:

MODEL: IDC-VCO15
PASTRY DISPLAY CASES – Combo Series
STANDARD FEATURES
Exterior

- Laminated steel plate,
- Exhibition area in EPOXI,
- Decoration DM lacqued,
- Hinged front tempered glass,
- Rear sliding doors,
- Double lateral glass sides,
- Dry countertop,
- Night curtain,

Interior

- Enamelled steel base,
- LED lighting in the front,
- LED lighting in canopy and under each shelf,

Insulation

- CFC-Free polyurethane insulation, entire cabinet structure is foamed-in place using a high-density polyurethane insulation,
- Low GWP & Zero ODP effect.

Refrigeration

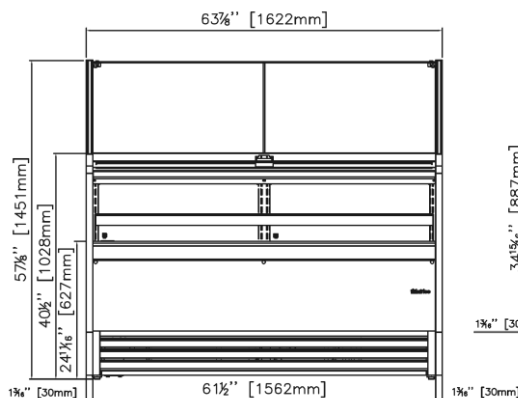
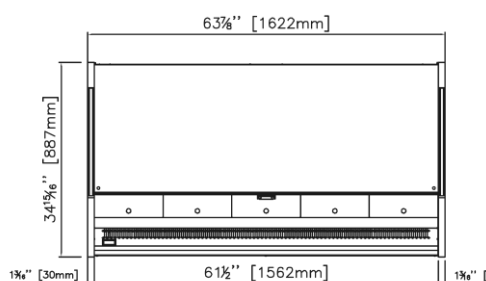
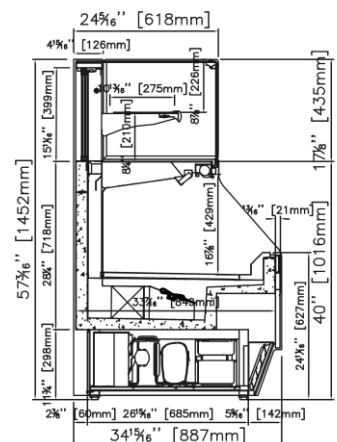
- Digital temperature controller with automatic defrost system,
- Rear electronic thermostat,
- Forced air refrigeration system,
- Stainless Steel Evaporative double trays, first, by hot gas, second by electrical resistance.
- Refrigerant gas R404A,
- Case engineered to operate at 75°F and 55% relative humidity.

Electrical

- Cord and NEMA 5-20P plug,
- Electrical connection is 115V / 1ph / 60 Hz.


ETL Listed to UL471 Standard and Sanitation classified to NSF7.
OPTIONAL FEATURES

- ✓ Customizable decoration for the front and sides,
- ✓ Optional decoration: Granate RAL 3003, Rojo RAL 3001, Rosa RAL DESIGN 3504035, Naranja RAL 2003, Amarillo RAL 1018, Beige RAL 1001, Azul RAL 5015, Celeste RAL DESIGN 2108025, Verde Oscuro RAL 6002, Violeta RAL 4007, Pistacho RAL DESIGN 1107060, Blanco RAL 9016, Negro RAL 9017.
- ✓ Electrical connection is 220-230 V / 1ph / 50 Hz (plug type varies).

PLAN VIEW
ELEVATION

PLAN VIEW

RIGHT VIEW


ETL LISTED TO UL471 STANDARD AND SANITATION CLASSIFIED TO NSF7 – WE RESERVE THE RIGHT TO CHANGE SPECIFICATIONS WITHOUT PRIOR NOTICE