



Electrolux

Ventilation Equipment 304 S/S Wall Hood+Filters 1600X1100mm

ITEM # _____
MODEL # _____
NAME # _____
SIS # _____
AIA # _____



Ventilation Equipment

304 S/S Wall Hood+Filters 1600X1100mm

642016 (EP1116T)

304 stainless steel wall hood
with filters

Short Form Specification

Item No. _____

Constructed in 304 AISI stainless steel. Continuously welded joints. Equipped with labyrinth filters in 304 AISI stainless steel, blind panels in 304 AISI stainless steel, grease collecting trough all around and condensate collecting tray.

Main Features

- External panels with upturned edges to avoid injuries.
- Prearranged for installation of lighting.
- Low noise level.

Construction

- Eyebolts and screw anchors for ceiling installation.
- 304 AISI stainless steel condensation collection tray.
- Labyrinth filters guarantee constant filtration to avoid clogging and to protect against fire.
- 304 AISI stainless steel blind panels for a correct exhaustion.
- Outlet holes are sized in order to minimize drops in pressure.
- Perimetral gutter with drain hole to transfer grease into a 304 AISI container.
- Entirely constructed in 304 AISI stainless steel.
- 304 AISI stainless steel labyrinth filters easily removable for cleaning.

Optional Accessories

- Speed variator for motors up to 1,17 kW PNC 640076 ☐
- Drain for hoods, diam.1/2" (m), with plug PNC 640409 ☐
- 36-watt lighting fixture with 1 lamp-IP 65 PNC 680805 ☐

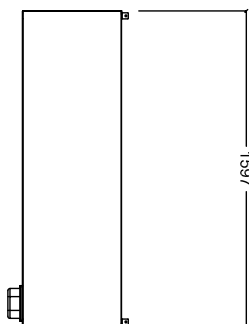
APPROVAL: _____



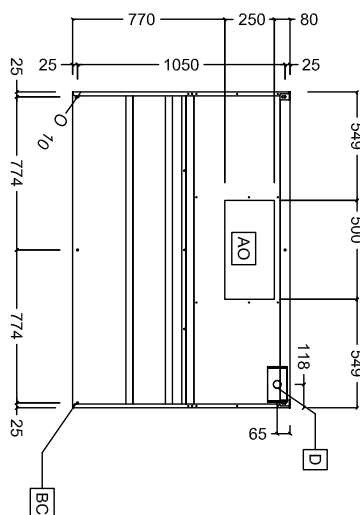
Electrolux

Ventilation Equipment
304 S/S Wall Hood+Filters 1600X1100mm

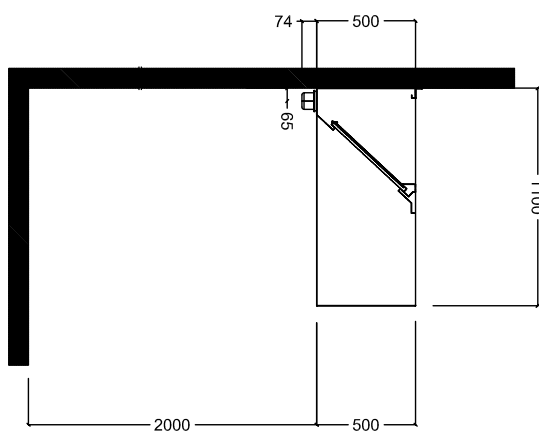
Front



Top



Side



Key Information:

External dimensions, Height:

642016 (EP1116T) 500 mm

External dimensions, Width: 1600 mm

External dimensions, Depth: 1100 mm

Air capacity: 2300 mc/h

Net weight: 42 kg