



# Electrolux

## Crosswise Convection Gas Convection Oven, 20 GN1/1 - 60Hz

ITEM # \_\_\_\_\_

MODEL # \_\_\_\_\_

NAME # \_\_\_\_\_

SIS # \_\_\_\_\_

AIA # \_\_\_\_\_



Crosswise Convection

Gas Convection Oven, 20 GN1/1 - 60Hz

260725 (FCG20160)

Gas convection oven  
20x1/1GN, crosswise - Saudi

### Short Form Specification

#### Item No. \_\_\_\_\_

Main structure in stainless steel, with seamless joints in the oven cavity. Double-glazed door with tempered glass. Cavity lighting. Unique air-flow channel system. Atmospheric burner.

Cooking cycles: air convection, convection with 5 stage humidification. Max. temperature of 300°C.

Functional level: base, manual.

"Cross-wise" pan rack suitable for 20x1/1GN.

Supplied with n. 1 roll-in rack, 60mm pitch, and n. 2 roll-in rack slides.

### Main Features

- IPX4 water resistance certification.
- Racks can be easily removed without the need for special tools.
- Unique air-flow system guarantees perfect distribution of heat throughout the oven cavity.
- Maximum temperature of 300°C.
- Food temperature probe available as accessory.
- Rapid cooling of oven cavity.
- Halogen lighting and "crosswise" pan supports allow clear and unobstructed view of the products being cooked.
- 5 Stage humidification control, to ensure perfect pastries and succulent roasts.
- Meets the requirements of CE, VDE and DVGW for safety.

### Construction

- Height adjustable feet.
- Access to all components from the front.
- Stainless steel oven cavity with rounded corners.
- Double-glazed door with tempered glass.
- External access door for electrical connections.
- All connections made on the left side below the oven.
- Integrated drain outlet.

### Included Accessories

- 1 of 60mm pitch roll-in rack for 20x1/1GN (included with the oven) PNC 922203

### Optional Accessories

- Pair of 1/1GN AISI 304 stainless steel grids ☐ PNC 921101
- Support for 1/2GN pan (2pcs) ☐ PNC 921106
- Automatic water softener for ovens ☐ PNC 921305
- Resin sanitizer for water softener ☐ PNC 921306
- Fat filter for gas 10 and 20 1/1 and 2/1 GN ovens (2 filters are necessary for 20-grid ovens) ☐ PNC 921700
- Probe for ovens 20x1/1 and 2/1GN ☐ PNC 921704
- Flue condenser for gas ovens 20x1/1GN ☐ PNC 921710
- Trolley for 20x1/1GN roll-in rack ☐ PNC 922132
- Base for 20x1/1GN roll-in rack ☐ PNC 922141
- Thermal jacket for mobile holding station 20x1/1GN ☐ PNC 922149

APPROVAL: \_\_\_\_\_

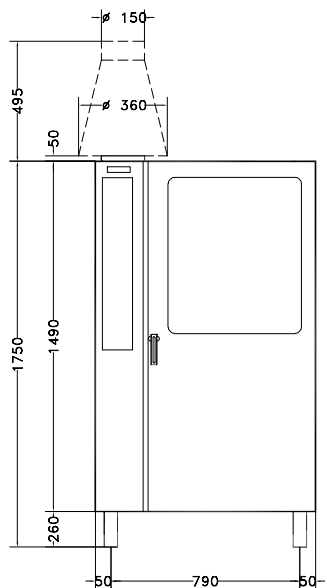


Electrolux

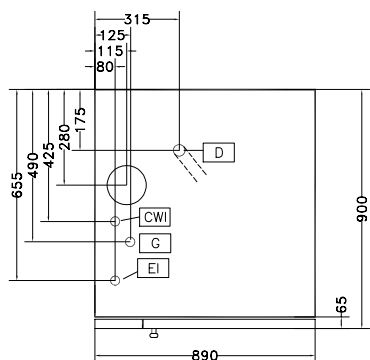
Crosswise Convection  
Gas Convection Oven, 20 GN1/1 - 60Hz

- Side external spray unit (needs to be mounted outside and includes support for mounting to oven) PNC 922171 ☐
- 60mm pitch roll-in rack for 20x1/1GN (included with the oven) PNC 922203 ☐
- 80mm pitch roll-in rack for 20x1/1GN PNC 922205 ☐
- 2 frying baskets for ovens PNC 922239 ☐
- Kit universal skewer rack and 6 short skewers for Lengthwise and Crosswise ovens PNC 922325 ☐
- Universal skewer rack PNC 922326 ☐
- Smoker for lengthwise and crosswise ovens - 4 kinds of smoker wood chips are available on request PNC 922338 ☐

Front

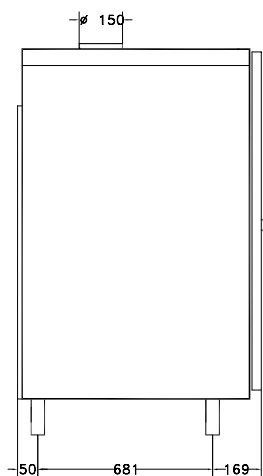


Top



CWI1 = Cold Water inlet 1  
CWI2 = Cold Water Inlet 2  
D = Drain  
EI = Electrical connection  
G = Gas connection

Side



## Electric

Supply voltage:  
260725 (FCG20160) 220/230 V/1N ph/60 Hz  
Auxiliary: 1 kW  
Electrical power: 0.5 kW

## Gas

Gas Power: 119315 Btu/hr (35 kW)

## Capacity:

Shelf capacity: 20

## Key Information:

External dimensions, Height: 1700 mm  
External dimensions, Width: 890 mm  
External dimensions, Depth: 900 mm  
Net weight: 246.2 kg  
Height adjustment: 80/0 mm  
Functional level: Basic  
Type of grids: 1/1 Gastronorm  
Runners pitch: 60 mm  
Cooking cycles - air-convection: 300 °C  
Internal dimensions, width: 590 mm  
Internal dimensions, depth: 503 mm  
Internal dimensions, height: 1350 mm