



Electrolux

Crosswise Convection Gas Convection Oven, 10 GN1/1 - 60Hz

ITEM # _____

MODEL # _____

NAME # _____

SIS # _____

AIA # _____



Electrolux



Crosswise Convection

Gas Convection Oven, 10 GN1/1 - 60Hz

260723 (FCG10160)

Gas convection oven
10x1/1GN, crosswise

Short Form Specification

Item No.

Main structure in stainless steel, with seamless joints in the oven cavity. Double-glazed door with tempered glass. Cavity lighting. Unique air-flow channel system.

Cooking cycles: air convection, convection with 5 stage humidification. Max. temperature of 300°C.

Functional level: base, manual.

"Cross-wise" pan rack suitable for 10x1/1GN. The pan rack, fixed, can be converted into a roll-in rack by using an optional kit.

Supplied with n. 1 pan rack, 60mm pitch (made up of n. 2 side hangers).

Main Features

- IPX4 water resistance certification.
- Racks can be easily removed without the need for special tools.
- Unique air-flow system guarantees perfect distribution of heat throughout the oven cavity.
- Maximum temperature of 300°C.
- Food temperature probe available as accessory.
- Rapid cooling of oven cavity.
- Halogen lighting and "crosswise" pan supports allow clear and unobstructed view of the products being cooked.
- 5 Stage humidification control, to ensure perfect pastries and succulent roasts.
- Meets the requirements of CE, VDE and DVGW for safety.

Construction

- Height adjustable feet.
- Access to all components from the front.
- Stainless steel oven cavity with rounded corners.
- Double-glazed door with tempered glass.
- External access door for electrical connections.
- All connections made on the left side below the oven.
- Integrated drain outlet.

Included Accessories

- 1 of 60mm pitch side hangers PNC 922121
- 10x1/1GN electric oven (included with the oven)

Optional Accessories

- Pair of 1/1GN AISI 304 stainless steel grids PNC 921101 ☐
- Support for 1/2GN pan (2pcs) PNC 921106 ☐
- Automatic water softener for ovens PNC 921305 ☐
- Resin sanitizer for water softener PNC 921306 ☐
- Fat filter for gas 10 and 20 1/1 and 2/1 GN ovens (2 filters are necessary for 20-grid ovens) PNC 921700 ☐
- Flue condenser for gas ovens 10x1/1-2/1 PNC 921701 ☐
- Probe for ovens 6 and 10x1/1GN PNC 921702 ☐
- Guide kit for 1/1GN drain pan PNC 921713 ☐
- Couple of grids for whole chicken 1/1GN (8 per grid) PNC 922036 ☐

APPROVAL: _____

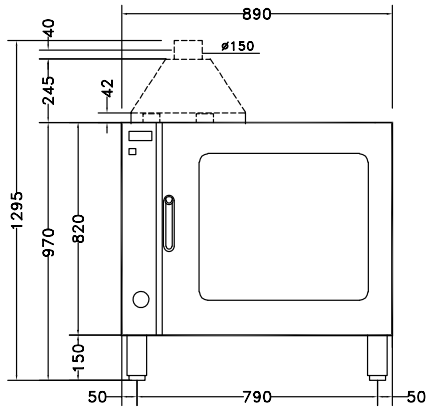
- Base for oven 10x1/1GN PNC 922102
☐
- Shelf guides for 10x1/1GN, ovens PNC 922106
base ☐
- Cupboard stand for oven 10x1/1GN PNC 922109
☐
- Hot cupboard stand for convection PNC 922112
oven 10x1/1GN ☐
- Base on castors for 10x1/1GN ovens PNC 922114
☐
- 80mm pitch side hangers 10x1/1GN PNC 922116
gas oven ☐
- 60mm pitch side hangers 10x1/1GN PNC 922122
gas oven (included with the oven) ☐
- Feet for ovens 6x1/1GN, 10x1/1 and PNC 922127
2/1GN ☐
- Trolley for 10x1/1GN roll-in rack PNC 922130
☐
- Retractable hose reel spray unit PNC 922170
☐
- Side external spray unit (needs to be PNC 922171
mounted outside and includes ☐
support for mounting to oven)
- 2 frying baskets for ovens PNC 922239
☐
- Grid for whole chicken 1/1GN (8 per PNC 922266
grid - 1,2kg each) ☐
- Kit universal skewer rack and 6 short PNC 922325
skewers for Lengthwise and ☐
Crosswise ovens
- Universal skewer rack PNC 922326
☐
- Smoker for lengthwise and crosswise PNC 922338
ovens - 4 kinds of smoker wood ☐
chips are available on request



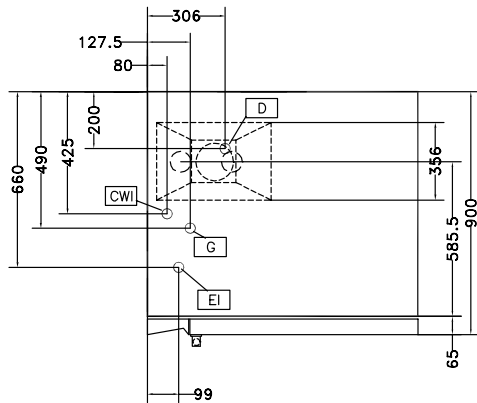
Electrolux

Crosswise Convection Gas Convection Oven, 10 GN1/1 - 60Hz

Front

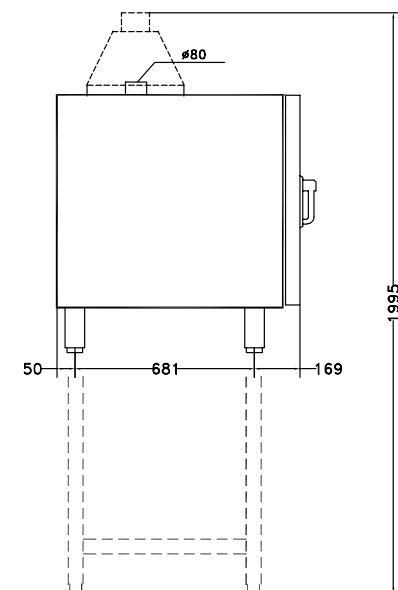


Top



CWI1 = Cold Water inlet 1
CWI2 = Cold Water Inlet 2
D = Drain
EI = Electrical connection
G = Gas connection

Side



Electric

Supply voltage:

260723 (FCG10160) 220-230 V/1N ph/60 Hz

Auxiliary:

0.35 kW

Electrical power max.:

0.35 kW

Gas

Gas Power:

63066.5 Btu/hr (18.5 kW)

Capacity:

Shelf capacity:

10

Key Information:

External dimensions, Height: 970 mm

External dimensions, Width: 890 mm

External dimensions, Depth: 900 mm

Net weight: 136 kg

Functional level: Basic

Type of grids: 1/1 Gastronorm

Runners pitch: 60 mm

Cooking cycles - air-convection: 300 °C

Internal dimensions, width: 590 mm

Internal dimensions, depth: 479 mm

Internal dimensions, height: 680 mm



Crosswise Convection
Gas Convection Oven, 10 GN1/1 - 60Hz

The company reserves the right to make modifications to the products without prior notice. All information correct at time of printing.

2016.09.15