



Electrolux

Cooking accessories Open Base with Tray GastroNorm Support, 6 and 10GN1/1&2/1 Ovens

ITEM # _____

MODEL # _____

NAME # _____

SIS # _____

AIA # _____



Cooking accessories

Open Base with Tray GastroNorm Support, 6
and 10GN1/1&2/1 Ovens

922195 (AOSQAC01)

Standard open base with
tray support for 6&10x1/1GN

922198 (AOSQAC14)

Open base with tray support
for 10x2/1GN

Short Form Specification

Item No. _____

Open base for air-o-steam and air-o-convect oven 6 and 10 1 /
1GN. Consists of a stainless steel tube frame 50x50 mm and a
flat shelf. Equipped with stainless steel guides for 1/1 GN. Posted
on 4 stainless steel leveling feet, 150 mm high.

Optionally, the frame can be provided with a second tray support
or a wheel set.

Main Features

- Supplied with 1 tray support as standard, with
the possibility to add a second one.
- The bottom of the base features holes for
assembling.
- Pre-arranged for an easy installation of the
ovens (no need to remove feet).

Construction

- Entirely constructed in stainless steel.

Optional Accessories

- Castor kit for base for 6&10x1/1 PNC
and 2/1 GN ovens (only for 922003 ☐
922195)
- Tray support for air-o-steam PNC
6&10x1/1GN open base (only for 922021 ☐
922195)
- Holder for detergent tank, to PNC
mount on open base 922212 ☐
- Pastry runners (400x600 mm) for PNC
6 & 10 GN1/1 oven bases (only for 922286 ☐
922195)

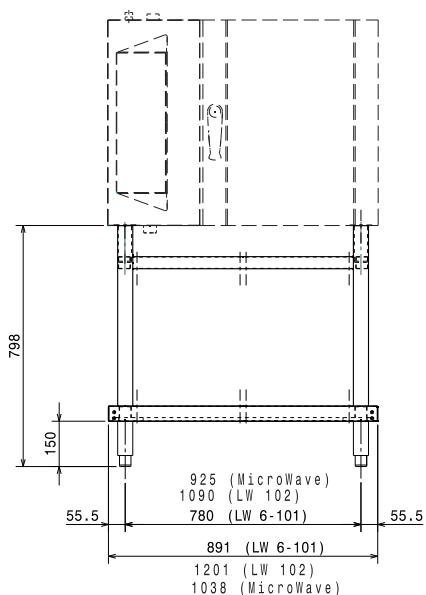
APPROVAL: _____



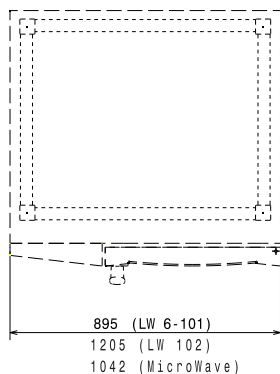
Electrolux

Open Base with Tray GastroNorm Support, 6 and 10GN1/1&2/1 Ovens
Cooking accessories

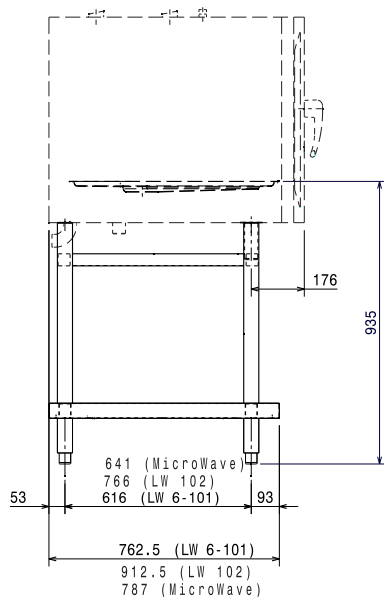
Front



Top



Side



Key Information:

External dimensions, Height:

922195 (AOSQAC01) 803 mm

922198 (AOSQAC14) 803 mm

External dimensions, Width:

922195 (AOSQAC01) 891 mm

922198 (AOSQAC14) 1201 mm

External dimensions, Depth:

922195 (AOSQAC01) 762 mm

922198 (AOSQAC14) 912 mm

Net weight:

922195 (AOSQAC01) 27 kg

922198 (AOSQAC14) 33 kg