



Electrolux

Modular Cooking Range Line 900XP Gas Cylindrical Boiling Pan 150lt indirect heat - autoclave

ITEM # _____

MODEL # _____

NAME # _____

SIS # _____

AIA # _____



Modular Cooking Range Line

900XP Gas Cylindrical Boiling Pan 150lt indirect heat - autoclave

391104 (E9BSGHIRFC)

150-lt gas boiling pan with pressure switch, indirect heating, autoclave

Short Form Specification

Item No. _____

Suitable for natural gas or LPG. To be installed on cantilever systems but also incorporates fixing points for bridging. Robust burners in stainless steel with flame failure device and protected pilot light. Exterior panels of unit in stainless steel with Scotch Brite finish. Double jacketed lid made in 2mm thick AISI 316 stainless steel. Pressed well with rounded edges manufactured from AISI 316 stainless steel. Right-angled side edges to allow flush-fitting junction between units. Includes safety valve to control working pressure. Temperature limiter for power regulation allowing precise temperature cooking. Features autoclave lid with air insulation in the jacket, endowed with watertight rubber gasket, safety valve and a sturdy stainless steel handle, to allow cooking with a slight overpressure (0,05 bar).

Main Features

- Autoclave lid with air insulation in the jacket, watertight rubber gasket, safety valve and sturdy stainless steel handle, to allow cooking with a slight overpressure (0,05 bar).
- Round kettle is suitable to cook, sauté or poach all kinds of produce.
- Produce is uniformly heated in the base and side walls of the kettle by an indirect heating system that uses integrally generated saturated steam at a temperature of 110° C in the jacket.
- External valve allows to manually evacuate excess air accumulated in the jacket during heating phase.
- Appliance is IPX5 water resistance certified.
- Manometer allows to correctly control the functioning of the pan.
- Energy regulation through a control knob.
- Safety thermostat protects against low water level.
- Safety valve avoids overpressure of the steam in the jacket.
- No overshooting of cooking temperatures, fast reaction.
- Large capacity food tap enables safe and effortless discharging of contents.
- Firmly fitting cover to reduce cooking time and save energy costs.
- Ergonomic: the depth of the vessel facilitates stirring the food, also the most delicate food.
- Discharge tube and tap are very easy to clean from outside.
- Closed heating system - no waste of energy.
- Solenoid valve to refill with hot and cold water.
- Smooth large surfaces, easy access for cleaning.
- Pressure switch control monitors energy and water consumption.
- The special design of the control knob system guarantees against water infiltration.

Construction

- Kettle shall be double jacketed including high quality thermal insulation of the pan, saving energy and keeping ambient temperature low.
- Pressed cooking vessel and double jacket in 316 AISI Stainless steel.
- Robust burners in stainless steel with flame failure device, protected pilot light and optimized combustion.
- All exterior panels in Stainless Steel with Scotch Brite finishing.
- Model has right-angled side edges to allow flush fitting joints between units, eliminating gaps and possible dirt traps.

Included Accessories

- 1 of Water additive against corrosion for indirect boiling pans PNC 927222

Optional Accessories

APPROVAL: _____



Electrolux

Modular Cooking Range Line
900XP Gas Cylindrical Boiling Pan 150lt indirect heat - autoclave

- | | | | |
|--|--------------------------|--|--------------------------|
| • Junction sealing kit | PNC 206086 | • Trolley with lifting & removable tank | PNC 922403 |
| | <input type="checkbox"/> | | <input type="checkbox"/> |
| • Draught diverter, 150 mm diameter | PNC 206132 | • 2-section universal basket for 150lt boiling pans | PNC 925019 |
| | <input type="checkbox"/> | | <input type="checkbox"/> |
| • Matching ring for flue condenser, 150 mm diameter | PNC 206133 | • Water additive against corrosion for indirect boiling pans | PNC 927222 |
| | <input type="checkbox"/> | | <input type="checkbox"/> |
| • Kit 4 wheels - 2 swivelling with brake - it is mandatory to install base support and wheels | PNC 206135 | • Pressure regulator for gas units | PNC 927225 |
| | <input type="checkbox"/> | | <input type="checkbox"/> |
| • Flanged feet kit | PNC 206136 | | |
| | <input type="checkbox"/> | | |
| • Frontal kicking strip for concrete installation, 800mm | PNC 206148 | | |
| | <input type="checkbox"/> | | |
| • Frontal kicking strip for concrete installation, 1000mm | PNC 206150 | | |
| | <input type="checkbox"/> | | |
| • Frontal kicking strip for concrete installation, 1200mm | PNC 206151 | | |
| | <input type="checkbox"/> | | |
| • Frontal kicking strip for concrete installation, 1600mm | PNC 206152 | | |
| | <input type="checkbox"/> | | |
| • Frontal kicking strip, 800mm (not for refr-freezer base) | PNC 206176 | | |
| | <input type="checkbox"/> | | |
| • Frontal kicking strip, 1000mm (not for refr-freezer base) | PNC 206177 | | |
| | <input type="checkbox"/> | | |
| • Frontal kicking strip, 1200mm (not for refr-freezer base) | PNC 206178 | | |
| | <input type="checkbox"/> | | |
| • Frontal kicking strip, 1600mm (not for refr-freezer base) | PNC 206179 | | |
| | <input type="checkbox"/> | | |
| • Pair of side kicking strips (not for refr-freezer base) | PNC 206180 | | |
| | <input type="checkbox"/> | | |
| • 2 panels for service duct for single installation | PNC 206181 | | |
| | <input type="checkbox"/> | | |
| • 2 panels for service duct for back to back installation | PNC 206202 | | |
| | <input type="checkbox"/> | | |
| • Kit 4 feet for concrete installation (not for 900 line free standing grill) | PNC 206210 | | |
| | <input type="checkbox"/> | | |
| • Flue condenser for 1 module, 150 mm diameter | PNC 206246 | | |
| | <input type="checkbox"/> | | |
| • Kit for automatic depressuring of the double jacket for 100/150 lt indirect and autoclave boiling pans | PNC 206279 | | |
| | <input type="checkbox"/> | | |
| • Chimney upstand, 800mm | PNC 206304 | | |
| | <input type="checkbox"/> | | |
| • Base support for feet or wheels - 800mm (700/900) | PNC 206367 | | |
| | <input type="checkbox"/> | | |
| • Base support for feet or wheels - 1200mm (700/900) | PNC 206368 | | |
| | <input type="checkbox"/> | | |
| • Base support for feet or wheels - 1600mm (700/900) | PNC 206369 | | |
| | <input type="checkbox"/> | | |
| • Base support for feet or wheels - 2000mm (700/900) | PNC 206370 | | |
| | <input type="checkbox"/> | | |
| • Rear paneling - 800mm (700/900) | PNC 206374 | | |
| | <input type="checkbox"/> | | |
| • Rear paneling - 1000mm (700/900) | PNC 206375 | | |
| | <input type="checkbox"/> | | |
| • Rear paneling - 1200mm (700/900) | PNC 206376 | | |
| | <input type="checkbox"/> | | |
| • Chimney grid net, 400mm (700XP/900) | PNC 206400 | | |
| | <input type="checkbox"/> | | |
| • 2 side covering panels for free standing appliances | PNC 216134 | | |
| | <input type="checkbox"/> | | |

Included Accessories

- 1 of Water additive against corrosion PNC 927222 for indirect boiling pans

Optional Accessories

- Junction sealing kit PNC 206086 ☐
- Draught diverter, 150 mm diameter PNC 206132 ☐
- Matching ring for flue condenser, 150 mm diameter PNC 206133 ☐
- Kit 4 wheels - 2 swivelling with brake - it is mandatory to install base support and wheels PNC 206135 ☐
- Flanged feet kit PNC 206136 ☐
- Frontal kicking strip for concrete installation, 800mm PNC 206148 ☐
- Frontal kicking strip for concrete installation, 1000mm PNC 206150 ☐
- Frontal kicking strip for concrete installation, 1200mm PNC 206151 ☐
- Frontal kicking strip for concrete installation, 1600mm PNC 206152 ☐
- Frontal kicking strip, 800mm (not for refr-freezer base) PNC 206176 ☐
- Frontal kicking strip, 1000mm (not for refr-freezer base) PNC 206177 ☐
- Frontal kicking strip, 1200mm (not for refr-freezer base) PNC 206178 ☐
- Frontal kicking strip, 1600mm (not for refr-freezer base) PNC 206179 ☐
- Pair of side kicking strips (not for refr-freezer base) PNC 206180 ☐
- 2 panels for service duct for single installation PNC 206181 ☐
- 2 panels for service duct for back to back installation PNC 206202 ☐
- Kit 4 feet for concrete installation (not for 900 line free standing grill) PNC 206210 ☐
- Flue condenser for 1 module, 150 mm diameter PNC 206246 ☐
- Kit for automatic depressuring of the double jacket for 100/150 lt indirect and autoclave boiling pans PNC 206279 ☐
- Chimney upstand, 800mm PNC 206304 ☐
- Base support for feet or wheels - 800mm (700/900) PNC 206367 ☐
- Base support for feet or wheels - 1200mm (700/900) PNC 206368 ☐
- Base support for feet or wheels - 1600mm (700/900) PNC 206369 ☐
- Base support for feet or wheels - 2000mm (700/900) PNC 206370 ☐
- Rear paneling - 800mm (700/900) PNC 206374 ☐
- Rear paneling - 1000mm (700/900) PNC 206375 ☐
- Rear paneling - 1200mm (700/900) PNC 206376 ☐

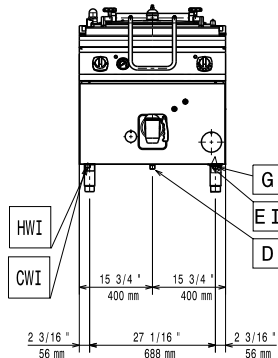
- Chimney grid net, 400mm (700XP/900) PNC 206400 ☐
- 2 side covering panels for free standing appliances PNC 216134 ☐
- Trolley with lifting & removable tank PNC 922403 ☐
- 2-section universal basket for 150lt boiling pans PNC 925019 ☐
- Water additive against corrosion for indirect boiling pans PNC 927222 ☐
- Pressure regulator for gas units PNC 927225 ☐



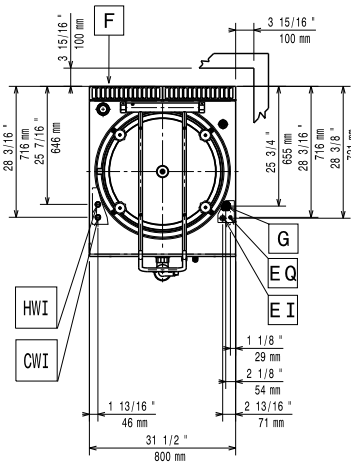
Electrolux

Modular Cooking Range Line 900XP Gas Cylindrical Boiling Pan 150lt indirect heat - autoclave

Front

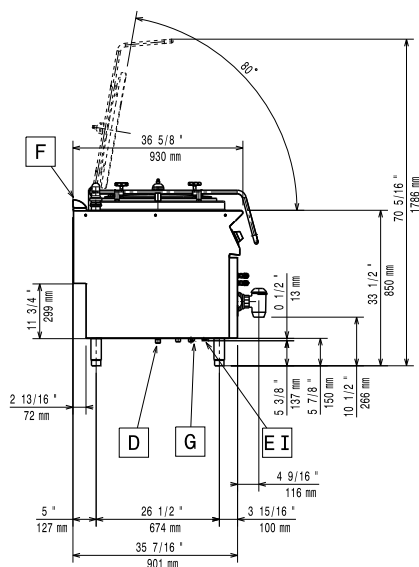


Top



- CWI = Cold Water inlet 1
D = Drain
EI = Electrical inlet (power)
G = Gas connection
HWI = Hot water inlet

Side



Electric

Supply voltage:

391104 (E9BSGHIRFC)

220-230 V/1 ph/50 Hz

Total Watts:

0.1 kW

Gas

Gas Power:

81816 Btu/hr (24 kW)

Standard gas delivery:

Natural Gas G20 (20mbar)

Gas Type Option:

LPG; Natural Gas

Gas Inlet:

1/2"

Key Information:

Pan useful capacity:

145 lt

Vessel (round) diameter:

600 mm

Net weight:

145 kg

Shipping weight:

170 kg

Shipping height:

1180 mm

Shipping width:

880 mm

Shipping depth:

1140 mm

Shipping volume:

1.18 m³

No clearance needed on rear sides of unit if wall is of non combustible type. If wall is combustible, minimum 50 mm wall clearance should be maintained.



Modular Cooking Range Line
900XP Gas Cylindrical Boiling Pan 150lt indirect heat - autoclave

The company reserves the right to make modifications to the products without prior notice. All information correct at time of printing.

2017.06.23