

# 700XP & 900XP accessories



Electrolux



# Index

## Accessories for specific functions ..... 4

Accessories for gas ranges.....	4
Accessories for gas boiling top HP.....	6
Accessories for electric ranges.....	6
Accessories for induction ranges.....	7
Accessories for oven ranges.....	8
Accessories for fry tops.....	9
Accessories for grills.....	11
Accessories for multifunctional cookers.....	14
Accessories for fryers.....	15
Accessories for pasta cookers.....	20
Accessories for bain maries.....	26
Accessories for braising pans.....	26
Accessories for boiling pans.....	27
Accessories for cupboards and open bases.....	29
Accessories for refrigerated bases.....	31
Soft cooker.....	31

## Accessories for installation ..... 32

Covering panels.....	32
Handrails.....	33
Chimney upstands.....	34
Stands / supports.....	35
Junction sealing kit.....	35
Stainless steel plinths.....	36
Cover panels for service duct.....	37
Installation on 100 mm concrete plinth.....	38
Installation on 150 mm concrete plinth.....	39
Support for bridge installation.....	40
Cantilever support.....	41
Wheels and flanged feet.....	44
Water columns.....	45

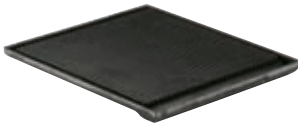
# Accessories for gas ranges



206260



206261



## Burner single plates

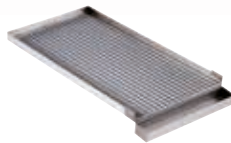
Range	700XP	
PNC	206260	206261
Plate	smooth	ribbed
Material	cast iron	

- Fry top mode for gas burners and simple service
- Use one on the 400 mm models, 2 on the 800 mm models and 3 on the 1200 mm models
- Can be installed on frontal burners only

921684



921685



## Burner double zone plates

Range	700XP	
PNC	921684	921685
Plate	smooth	ribbed
Material	stainless steel	

- Fry top mode for 700 range gas burners and simple service
- Equipped with a removable grease collection container

206264



206170



## Burner radiant plates

Range	700XP	900XP
PNC	206264	206170
Plate		only for 6kW burners
Material	cast iron	

- Solid top mode for gas burners and simple service

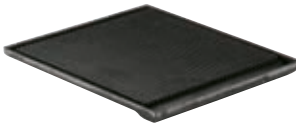
# Accessories for gas ranges



206171



206172



## Burner single plates

Range	900XP	
PNC	206171	206172
Plate	smooth	ribbed
Material	cast iron	

- Fry top mode for 900XP gas burners
- Except for 3-burner top 391024

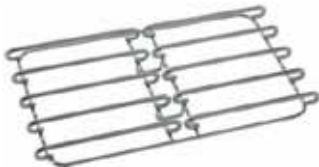
206363



## Wok support

Range	700XP and 900XP
PNC	206363
Material	stainless steel

- Wok pan support for open burners
- Except for 3-burner top 391024

206297  
206298

## Twin-burner stainless steel grids

Range	700XP	900XP
PNC	206297	206298
Material	stainless steel	

- Pans support for gas burners

# Accessories for gas boiling top HP



206283



## Ground support for 3-burner gas boiling top (391024)

Range	900XP	
PNC	206283	
Material	stainless steel	

- Lets the 3-burner top 391024 be used like a stockpot

# Accessories for electric ranges

206168  
206056

## Cast iron bars

Range	700XP	900XP
PNC	206168	206056
Material	cast iron	

- 2 cast iron bars to obtain 2 wider flat cooking zones
- 700XP for hot square plates only

# Accessories for induction ranges



## Induction pans

653596		700XP and 900XP		
	PNC	653596	653597	653598
	Material	stainless steel	aluminum	aluminum
	Handle	stainless steel	stainless steel	stainless steel
	Diameter	200 mm	240 mm	280 mm



## Induction wok-pans

910613		700XP and 900XP		
	PNC	910613	911587	911588
	Material	mild steel	stainless steel	stainless steel
	Handle	wood	stainless steel	-
	Diameter	360 mm	360 mm	360 mm
	Height	105 mm	105 mm	-

# Accessories for oven ranges



164250



## Chrome grid

Range	700XP	900XP
PNC	164250	
Oven	for static oven	
Size	2/1 GN	
Material	chrome	

- 1 piece is included in standard delivery

206204



206243



## Chrome grids

Range	900XP	
PNC	206204	206243
Oven	for large oven*	for ventilated oven**
Size	972x687 mm	2/1 GN
Material	chrome	

- \* For codes 391015 and 391016; 1 piece is included in standard delivery
- \*\* 2 pieces are included in standard delivery



# Accessories for fry tops



## Scrapers

Range	700XP and 900XP	
PNC	164255	206420
Use on	smooth plate	ribbed plate

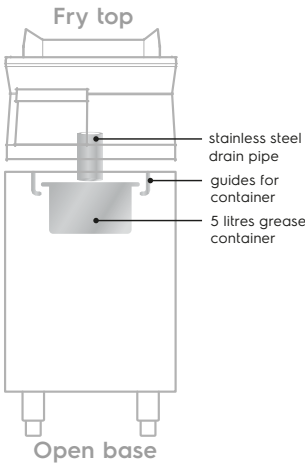
- 1 or 2 pieces, according to the surface type, is included in the standard delivery for the 700XP and 900XP chrome plated models and are optional for mild steel 700XP models



## Grease container

Range	700XP and 900XP	
PNC	206346	

- Includes containers, guides, stainless steel drain pipe to convey the grease/oil from the fry top cooking surface to the container and front closing panel
- To be used with top, cupboard and open base



# Accessories for fry tops



206296



## Stopper

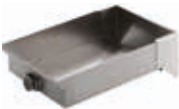
Range	900XP		
PNC	206296		
Material	stainless steel		

- Stopper for fry top with horizontal plate - used to keep the grease released by the food on the frying plate
- Except for HP version

206153



216153



206345



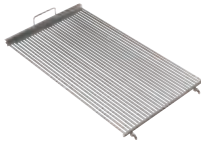
## Water drains

Range	900XP		
PNC	206153	216153	206345
Appliance width	400 mm	800 mm	1200 mm

# Accessories for grills



206408



## Grids for freestanding gas grills

Range	700XP		900XP	
PNC	206414	206410	206408	206404
Appliance width	400 mm	800 mm	400 mm	800 mm
Material	stainless steel			

- Grills are equipped with cast-iron grids with drainage channels as standard

206415

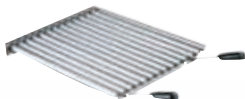


## Grids with drain channels for freestanding grills

Range	700XP		900XP	
PNC	206415	206411	206409	206405
Appliance width	400 mm	800 mm	400 mm	800 mm
Material	stainless steel			

- Grills are equipped with cast-iron grids with drainage channels as standard

206415



206418



## Grids with drain channels for top grills

Range	700XP		
PNC	206415	206416	206418*
Appliance width	400 mm	800 mm	400 mm
Material	stainless steel		
Note	grid	grid	support

- Grills are equipped with cast-iron grids with drainage channels as standard
- \*Applied to the splashguard as a support to adjust the inclination of the grid. Order 2 pieces for 800 mm unit
- Except for electric Powergrill<sup>HP</sup>

# Accessories for grills



206422



## Scrapers

Range	700XP and 900XP			
PNC	206421	206422	206347	206436
Grid type	stainless steel with drain channels	cast iron	cast iron	steel
Appliance type	standard	standard	HP gas	HP electric
Included		•		•
Note	scraper	scraper	scraper with hook	scraper

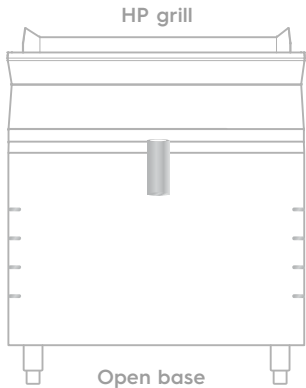
206437



## Drain extension for HP electric grills

Range	700XP and 900XP
PNC	206437
Material	stainless steel
Note	to be used with 206257 (700XP) or 206145 (900XP)

- ▶ To be used as an alternative to standard drain together with a GN container to be ordered separately
- ▶ Cannot be applied to 1200mm wide units



# Accessories for grills



206280



## Water filling taps

Range	700XP and 900XP	
PNC	206280	206281
Appliance width	400 mm	800 mm

- For gas and electric freestanding grills

# Accessories for multifunctional cookers



921689



921690



### Lids

Range	700XP and 900XP	
PNC	921689	921690
Appliance width	400 mm	800 mm

- For gas and electric multifunctional cookers

164255



921694

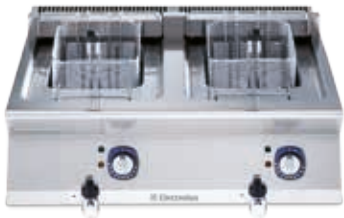


### Scrapers

Range	700XP and 900XP	
PNC	164255	921694
Note	scraper	blades with rounded corners

- Included in standard delivery

# Accessories for fryers



960638



921608



## Baskets for gas and electric fryers

Range	700XP	
PNC	960638	921608
Quantity	2	1
Size	half	full
Appliance typology	2x5 and 7 lt	7 lt

▸ 960638 is included in standard delivery

921629



921691



921692



## Baskets for gas and electric fryers

Range	700XP		
PNC	921629	921691	921692
Quantity	1	1	2
Size	full	full	half
Appliance typology	12 lt	14 and 15 lt	14 and 15 lt

▸ 921629 is included in standard delivery

921609



921642

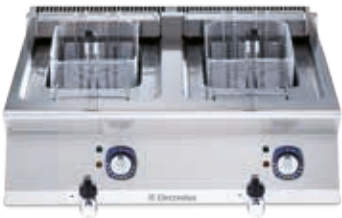


## Baskets for gas and electric fryers

Range	700XP	
PNC	921609	921642
Quantity	1	1
Size	half	full
Appliance typology	34 lt	34 lt

▸ 921609 is included in standard delivery

# Accessories for fryers



921691



921692



206196



## Baskets for gas and electric fryers

Range	700XP and 900XP		700XP
PNC	921691	921692	206196
Quantity	1	2	1
Size	full	half	full
Included	1	1 for programmable	-
Appliance typology	14 and 15 lt standard	14 and 15 lt standard & programmable	15 lt programmable

## Baskets for gas and electric fryers

927223



927226

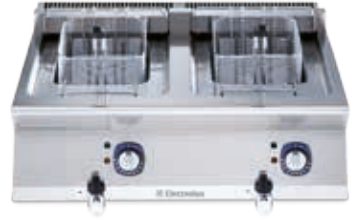


Range	900XP			
PNC	927223	927226	927200	927201
Quantity	2	1	2	1
Size	half	full	half	full
Appliance typology	18 and 23 lt	18 and 23 lt	18 and 23 lt	18 and 23 lt
			standard	
			with a front hook*	

- ▶ 927223 is included in standard delivery
- ▶ \* Can be used to block baskets on the top for oil dripping



# Accessories for fryers



206235

206173



## Sediment trays

Range	700XP and 900XP	900XP
PNC	206235	206173
Appliance typology	15 lt	23 lt

- For freestanding V-shape fryers

921695

927227



## Unclogging rods

Range	700XP and 900XP	900XP
PNC	921695	927227
Appliance typology	15 lt	23 lt

- For drain pipe of freestanding V-shape fryers

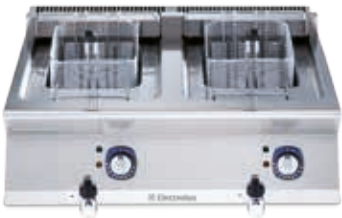
921693



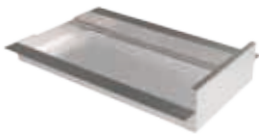
## Oil filter for freestanding fryers

Range	700XP and 900XP
PNC	921693
Appliance typology	7, 2x7, 14, 2x14, 15 and 2x15 lt
Material	stainless steel

# Accessories for fryers



206359



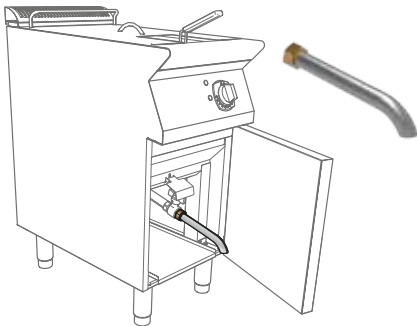
206143



## Filter for free-standing fryers

Range	900XP	
PNC	206359	206143
Appliance typology	freestanding	
Material	stainless steel	stainless steel and polyester
Included for 23 lt		•

206209  
206301



## Extension for oil drainage

Range	700XP and 900XP	900XP
PNC	206301	206209
Appliance typology	15 lt	23 lt

- Compulsory when the fryer is installed on plinth

921696



960645



## Deflectors

Range	700XP and 900XP	900XP
PNC	921696	960645
Appliance typology	15 lt	23 lt

- For floured products for freestanding V-shape fryers
- The deflector is lying on the inclined part of the well, in order to avoid the bread or flour released by the products to lie there and get burned.

# Accessories for fryers



206201



## Hygienic lid for fryers

Range	900XP
PNC	206201
Appliance typology	23 lt

- Standard lid delivered as standard for the 23 litres fryer model.

200171



## Lid for oil container

Range	900XP
PNC	200171
Appliance typology	23 lt

# Accessories for pasta cookers



921611



921610



### Baskets

Range	700XP	
PNC	921611	921610
Quantity	1	2
Size	350x200 mm	170x220 mm
Appliance typology	24.5 and 24.5+24.5 lt	24.5 and 24.5+24.5 lt

- Baskets are not included as standard; only exception is programmable pasta cooker with automatic lifting (code 371100)

921619



### Baskets

Range	700XP
PNC	921619
Quantity	2
Size	105x350 mm
Appliance typology	24.5 and 24.5+24.5 lt

- Baskets are not included as standard; only exception is programmable pasta cooker with automatic lifting (code 371100)

# Accessories for pasta cookers



921018

206423

921606



## Baskets and support for baskets

Range	700XP		
PNC	921018	206423	921606
Quantity	2	2	1
Max nr. of baskets per well	4	6	-
Size	105x160 mm	105x105 mm	230x350 mm
Appliance typology	24,5 and 24,5+24,5 lt	24,5 and 24,5+24,5 lt	24,5 and 24,5+24,5 lt
Note	baskets	baskets	support

- ▶ Baskets are not included as standard; only exception is programmable pasta cooker with automatic lifting (code 371100)
- ▶ Support is mandatory

# Accessories for automatic pasta cookers



206312

206314

206362



## Baskets for automatic pasta cooker

Range	700XP		
PNC	206312	206314	206362
Quantity	2	2	1
Size	115x163 mm	105x350 mm	350x230 mm
Appliance typology	automatic pasta cooker		
Note	baskets	baskets	support

- ▶ Support is recommended

# Accessories for pasta cookers



206433



206237



### Baskets

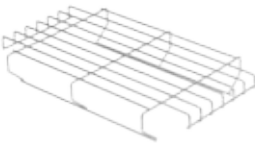
Range	900XP	
PNC	206433	206237
Quantity	2	1
Max nr. of baskets per well	6	2
Size	130x130 mm 6 fit in a 40 lt well	135x310 mm 2 fit in a 40 lt well
Appliance typology	40 and 40+40 lt	40 and 40+40 lt

• Code 206238 compulsory for: 206433 and 206237

206233



206238



### Baskets and support for baskets

Range	900XP	
PNC	206233	206238
Quantity	1+2	1
Size	1x 1/3 GN + 2x135x310 mm	295x505 mm
Appliance typology	40 and 40+40 lt	40 and 40+40 lt
Note	baskets	support

• Code 206238 compulsory for: 206233

927216



927211



927210



### Baskets

Range	900XP		
PNC	927216	927211	927210
Quantity	1	2	3
Size	1/1 GN	1/2 GN	1/3 GN
Appliance typology	40 and 40+40 lt	40 and 40+40 lt	40 and 40+40 lt

# Accessories for pasta cookers



927212



927213



## Round baskets

Range	900XP	
PNC	927212	927213
Quantity	3	6
Size	Ø 181 mm	Ø 135 mm
Appliance typology	40 and 40+40 lt	40 and 40+40 lt

927219



960644



## Supports for 40 lt pasta cookers

Range	900XP	
PNC	927219	960644
Size	290x500x115 mm	330x535x10 mm
Note	grid support for round baskets (compulsory for 927212 and 927213)	support frame to hold 6 round baskets (alternative to 927219)

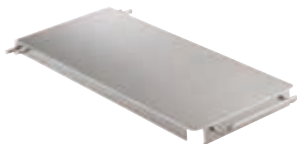
# Accessories for pasta cookers



921607



206190



### Lids and lid holder

Range	700XP	900XP
PNC	921607	206190
Appliance typology	24.5 lt and 24,5 + 24,5 lt	40 lt and 40+40 lt
Note	lid	lid and lid holder

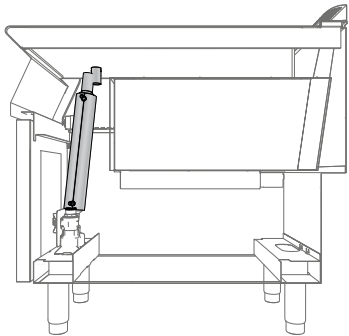
206344



### Energy Saving Device

Range	700XP and 900XP
PNC	206344
Note	1 per well needed

- Used to preheat fresh water to refill the well, thus saving energy





# Accessories for pasta cookers

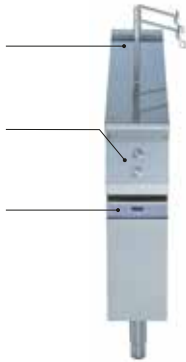


## 206352

2 Lifting arms

Push-buttons for  
manual use or  
cooking cycle start

User interface  
(9 programs  
storable)



## Programmable basket lifting unit

Range	700XP
PNC	206352
Dimension	200 mm wide

## Available baskets



**921610** - 2 baskets 170x220 mm  
see page 20



**921018** - 2 baskets 105x160 mm  
see page 21



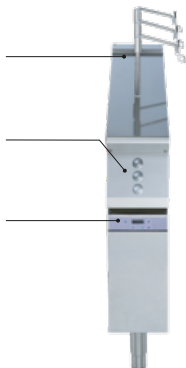
**206396** - frame/support for  
2 single portion baskets

## 206353

3 Lifting arms

Push-buttons for  
manual use or  
cooking cycle start

User interface  
(9 programs  
storable)



## Programmable basket lifting unit

Range	900XP
PNC	206353
Dimension	200 mm wide

## Available baskets



**927210** - 3 X 1/3GN baskets  
see page 22



**206433** - 2 basket 130x130 mm  
see page 22



**206395** - frame/support for  
2 single portion baskets

Accessories for

bain maries



921622



Drilled false bottoms

Range	700XP and 900XP	
PNC	921622	921623
Appliance width	400 mm	800 mm

921627



Water filling tap

Range	700XP and 900XP	
PNC	921627	
Material	stainless steel	

Accessories for

braising and boiling pans



922403



Trolleys with lifting and removable tank

Range	700XP and 900XP	
PNC	922403	
Material	stainless steel	

# Accessories for boiling pans



921626



## Basket

Range	700XP and 900XP
PNC	921626
Appliance typology	60 lt
Note	1-section basket

- To make your boiling pan work as a pasta cooker!

925018



## Basket

Range	900XP
PNC	925018
Appliance typology	100 lt
Note	2-section universal basket

- To make your boiling pan work as a pasta cooker!

925019



## Basket

Range	900XP
PNC	925019
Appliance typology	150 lt
Note	2-section universal basket

- To make your boiling pan work as a pasta cooker!

# Accessories for boiling pans



206279



## Automatic depressurization kit

Range	900XP
PNC	206279
Appliance typology	100 and 150 lt

- For indirect heating boiling pans (double jacketed)
- If not installed: depressurization of the double-jacket must be done manually

927222



## Water additive against corrosion

Range	700XP and 900XP
PNC	927222
Appliance typology	100 and 150 lt indirect heating

- For indirect heating boiling pans
- 1 container of water additive against corrosion is already included in the standard appliances delivery

# Accessories for cupboards and open bases



206350



## Door for open base

Range	700XP and 900XP
PNC	206350

- ▶ Same for left and right-side door

206259



## Electric heating kit for cupboard

Range	700XP and 900XP
PNC	206259
Size	360x610x60 mm
Electric conn.	230V 1ph 50/60 Hz
Power	0.65 kW

- ▶ To be fixed on the bottom of the base
- ▶ The base has to be with doors and can not be used as holding cabinet for food
- ▶ Only in combination with gas appliances

206245



## Central support

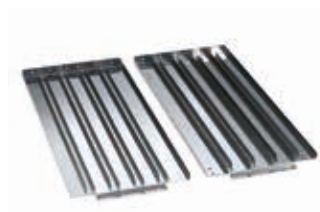
Range	700XP and 900XP
PNC	206245
Note	central support for installation of drawers and grids (on 800/1200 mm bases) and of doors (on 1200 mm bases)

- ▶ Needed for installation of drawers and grid runners (1 piece for 800 mm)
- ▶ Needed for installation of drawers and grid runners (2 pieces for 1200 mm) or only doors (1 piece for 1200 mm)
- ▶ Needed if Powergrill or HP fry top are mounted on base

# Accessories for cupboards and open bases



206244



### Supports with side runners

Range	700XP		900XP
PNC	206257	206244	206145
Note	2 supports with side runners for 4 GN 1/1 containers for open base 371112, 371113 and 371114	2 supports with side runners for 4 GN 1/1 containers for cupboards	2 supports with side runners for 4 GN 1/1 containers for open base or cupboards

206318



### Drawers

Range	700XP	900XP
PNC	206318	206334
Quantity	2	2
Height	100 mm	100 mm

# Accessories for refrigerated bases



206351



## Drawers

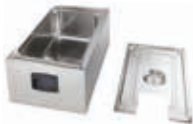
Range	700XP
PNC	206351
Quantity	2

# Soft cooker

206428



206429



## Soft cooker

Range	700XP and 900XP	
PNC	206428	206429
Size	128x175x340 mm	GN 1/1
Material	stainless steel	
Note	plug-in	with lid

Installation accessories

Covering panels

216000  
216134



216277  
216278



Aesthetical side covering panels

Range	700XP	900XP
PNC	216000*	216134*
Appliance typology	freestanding 700 mm high	freestanding 700 mm high
PNC	216277	216278
Appliance typology	top 250 mm high	top 250 mm high

- The code includes 2 side covering panels
- \* Should be ordered as a special in case of installation on ref-freezer base (code 727096)

206373



Rear covering panels

Range	700XP and 900XP			
PNC	206373	206374	206375	206376
Size	600 mm	800 mm	1000 mm	1200 mm

- For island installation to cover the back of the appliances



# Installation accessories

## Handrails

216047



### Front handrails 50 mm depth

Range	700XP and 900XP			
PNC	216046	216047	216049	216050
Size	400 mm	800 mm	1200 mm	1600 mm

206308



### Back handrails 50mm depth

Range	700XP and 900XP	
PNC	206308	206309
Size	800 mm	1200 mm

► To be used for island installation

206307



### Side handrails 50 mm depth

Range	700XP	900XP
PNC	206307	216044
Note	2 pieces: right and left side	2 pieces: right and left side

216185



### Portioning shelves 140 mm depth

Range	700XP and 900XP	
PNC	216185	216186
Size	400 mm	800 mm

Note: none can be mounted to 700XP induction units

Installation accessories

Chimney upstands

206304



Chimney upstands

Range	700XP and 900XP				
PNC	206302	206303	206304	206305	206306
Width	200 mm	400 mm	800 mm	1000 mm	1200 mm

206400



Chimney grid nets

Range	700XP and 900XP			
PNC	206399	206400	206402	206403
Width	200 mm	400 mm	500 mm	590 mm

## Installation accessories

# Stands / supports

206183



### Stand / supports (shelves)

Range	900XP	
PNC	206183	206184
Width	400 mm	800 mm
Note	to be installed on the neutral work tops	

► Can not be used with Salamanders

## Installation accessories

# Junction sealing kit

206086



### Junction sealing kit

Range	700XP and 900XP
PNC	206086
Note	junction sealing kit to fill any possible gap between side-by-side appliances and prevent from any dirt infiltration

Installation accessories

stainless steel plinths



Frontal kicking strips

Range	700XP and 900XP					
PNC	206174	206175	206176	206177	206178	206179
Width	200 mm	400 mm	800 mm	1000 mm	1200 mm	1600 mm
Appliance typology	all*	all*	all*	all*	all*	all*

► \* Except 23 lt fryer and ref-freezer base

Frontal kicking strips

Range	900XP	
PNC	206203	880336
Appliance typology	23 lt fryers	ref-freezer base

Side kicking strips

Range	700XP	900XP	900XP
PNC	206249	206180	880221
Width	700 mm	900 mm	900 mm
Appliance typology	all*	all*	ref-freezer base

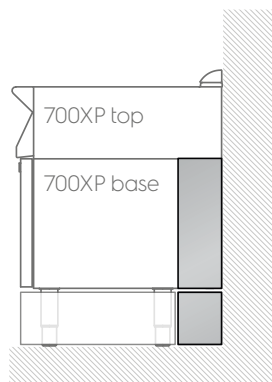
► \* Except ref-freezer base

Kicking strips final effect



- Front and side kicking strips are aesthetical and hygienic elements, but they do not support the appliance's weight (that is the feet's task)
- Front kicking strips can be mounted on the back side if needed

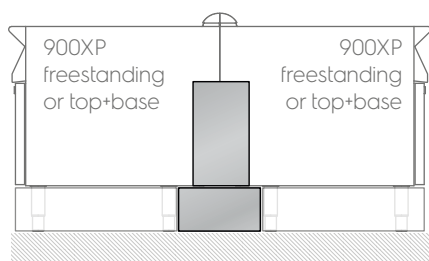
# Cover panels for service duct



## Kit of panels for service duct

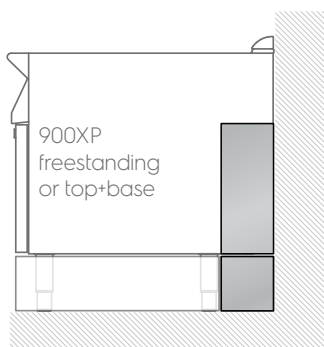
Range	700XP
PNC	206248
Note	kit of panels for service duct for installation top on base
Size	300x40x160 mm

- Freestanding versions of 700XP are without service duct
- Service duct cover panels are not needed in case aesthetical cover panels (code 216000) are ordered



## Kit of panels for service duct

Range	900XP
PNC	206202
Note	kit of panels for service duct for back to back installation
Size	900x20x150 mm

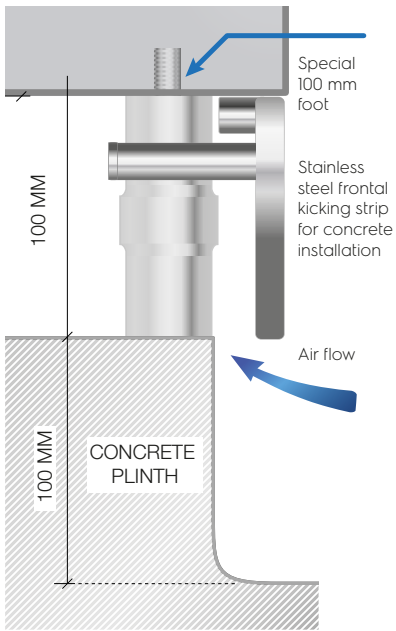


## Kit of panels for service duct

Range	900XP
PNC	206181
Note	kit of panels for service duct for installation top on base or for freestanding units
Size	300x40x160 mm

- Service duct cover panels are not needed in case aesthetical cover panels (code 216134) are ordered

# Installation on 100 mm concrete plinth



### Special feet for concrete installation

Range	700XP and 900XP
PNC	206210
Note	Except for: ref-freezer bases, 700XP programmable pasta cooker and 700XP and 900XP programmable fryers

- 1 kit per appliance
- The concrete plinth must be 100 mm high in order to have the worktop at 900 mm height: special feet for concrete installation are not adjustable in height

### Frontal kicking strips

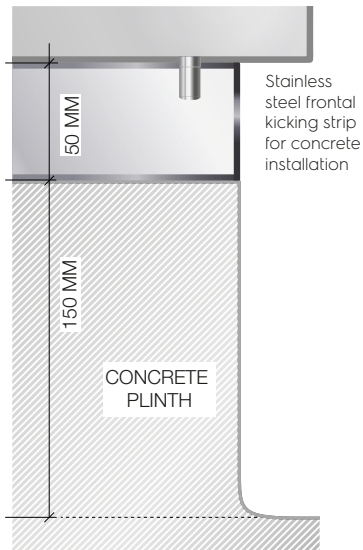
Range	700XP and 900XP					
PNC	206146	206147	206148	206150	206151	206152
Width	200 mm	400 mm	800 mm	1000 mm	1200 mm	1600 mm



### Side kicking strips

Range	700XP	900XP
PNC	206265	206157

# Installation on **150 mm concrete plinth**



**Accessories for installation on 150 mm high concrete plinth are available on request.**

- Special frame for installation
- Available for all appliances except for ref-freezer base (code 727096) and some limitations for freestanding fryers due to the oil collection basin which cannot be installed
- Not possible for single unit installation

# Support for bridge installation

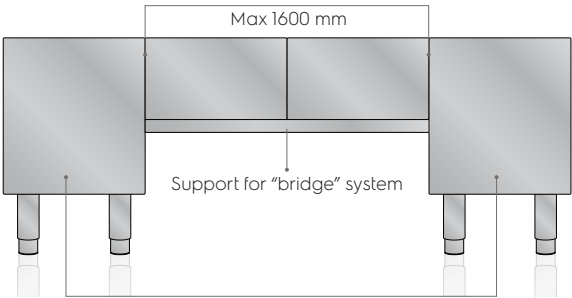
206137



## Supports for bridge installation

Range	700XP and 900XP					
PNC	206154	206137	206138	206139	206140	206141
Width	400 mm	800 mm	1000 mm	1200 mm	1400 mm	1600 mm

• Only for top appliances

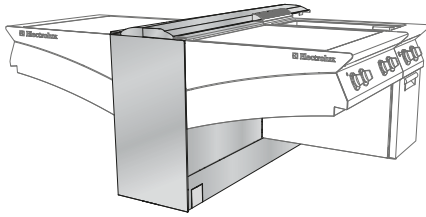


400/800 mm freestanding or "top on base"  
appliances (it is recommended to use flanged feet  
for 400 mm appliances)



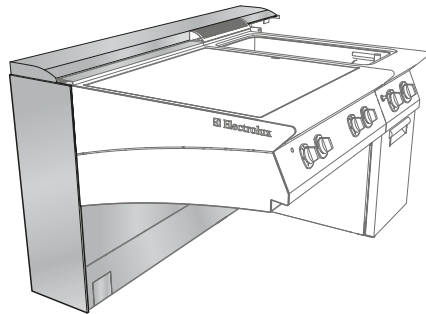
# Installation accessories

## Cantilever support



### Central supports with service duct

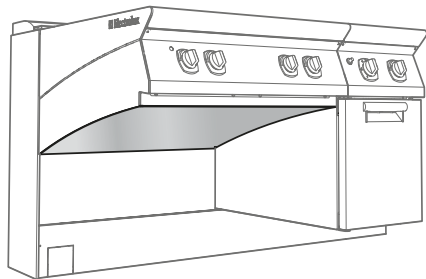
Range	700XP and 900XP				
PNC	206216	206217	206218	206219	206220
Size	2000 mm	2400 mm	2800 mm	3200 mm	3600 mm



### Wall type supports with service duct

Range	700XP and 900XP				
PNC	206211	206212	206213	206214	206215
Size	2000 mm	2400 mm	2800 mm	3200 mm	3600 mm

- ▶ Special frame for installation
- ▶ Includes support frame, cover panels of central column, lower frontal cover panels of the support frame, top cover panel



### Undercover panels

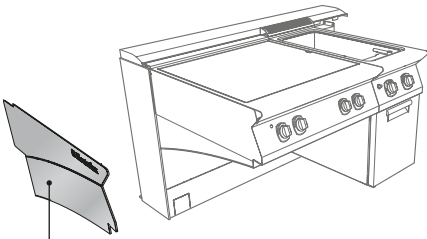
Range	700XP			
PNC	206323	206324	206325	206329
Size	200 mm	400 mm	800 mm	1200 mm

Range	900XP			
PNC	206330	206331	206332	206336
Size	200 mm	400 mm	800 mm	1200 mm

**Note:** Ask your local Electrolux Sales representative for the Cantilever Configurator

# Installation accessories

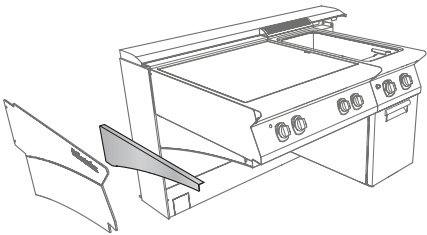
## Cantilever support bars and cover panels



**Cover panel.**  
No need to order lower  
covering elements in this case  
(codes 206258, 206295)

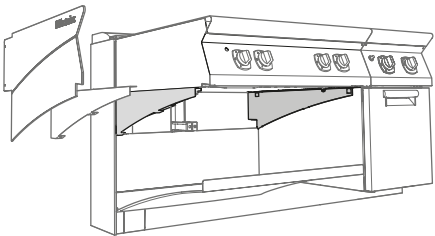
### 2 aesthetic side cover panels

Range	700XP	900XP
PNC	206326	206337



### 2 lower covering elements

Range	700XP	900XP
PNC	206258	206295



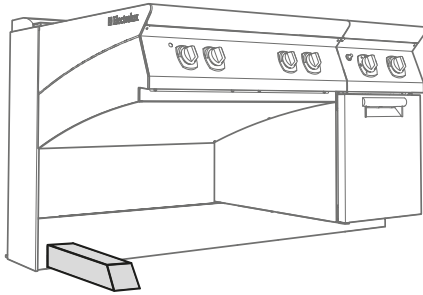
### 2 support bars for top units

Range	700XP	900XP
PNC	206315	206322

**Note:** Ask your local Electrolux Sales representative for the Cantilever Configurator

# Installation accessories

## Cantilever support



### Floor fixing foot

Range	700XP and 900XP
PNC	206226
Dimension WxDxH	105 x 485 x 100 mm

**Note:** Ask your local Electrolux Sales representative for the Cantilever Configurator

# Installation accessories

## Wheels and flanged feet

206135



### Wheels

Range	700XP and 900XP		
PNC	206135	206432*	880234
Appliance	4 wheels (2 with brakes)	6 wheels (3 with brakes)	4 wheels for ref-freezer base

► \*No support bar needed

### Supports for hygienic installation on feet or wheels - cross-wise



Range	700XP and 900XP					
PNC	206366	206431	206367	206368	206369	206370
Appliance typology	all*	all*	all*	all*	all*	all*
Width	400 mm	600 mm	800 mm	1200 mm	1600 mm	2000 mm

► \*Except 700XP 6 burner range with large oven , 900XP 23 lt fryers and pasta cookers and refrigerated bases (see length-wise supports below)

► Not for top appliances

### Supports for hygienic installation on feet or wheels - lenght-wise

Range	700XP	900XP	
PNC	206371	206430	206372
Quantity	2	3	2
Appliance	6 burner range with large oven	refrigerated bases	23 lt fryers and pasta cookers

206136



### Flanged feet

Range	700XP and 900XP
PNC	206136
Quantity	2

# Installation accessories

## Water columns

206377



### Flow meter

Range	700XP	900XP
PNC	206377	206378

- Top equipped with water column and liter counter

206289



### Water column with swivel arm

Range	700XP and 900XP
PNC	206289

- Cannot be installed on: Fryers, Chip scuttles, Bases (neutral, freezer, refrigerated)

206291

206290



### Water column extension

Range	700XP	900XP
PNC	206291	206290

- Not needed when the water column inlet can be reached directly with the flexible water hose from the water net
- Both codes contain two extensions of different length
- Mandatory for 900XP installations

Installation accessories

Water columns

206231



External support for water column

Range	700XP and 900XP
PNC	206231

- To install the water column on the side or rear of the appliance

# Request an offer to personalize your cooking area

Name.....

E-mail .....

.....

Telephone .....

Company .....

Fax .....


.....

Address .....

.....

.....

Item name	PNC	Quantity



Electrolux  
Authorized  
Partner

Dealer stamp

Look for the Electrolux partner  
nearest to you in our website:  
[www.electrolux.com/professional](http://www.electrolux.com/professional)



Discover the Electrolux Excellence  
and share more of our thinking at  
[www.electrolux.com/professional](http://www.electrolux.com/professional)

Follow us on



## Excellence with the environment in mind

- ▶ All our factories are ISO 14001-certified
- ▶ All our solutions are designed for low consumption of water, energy, detergents and harmful emissions
- ▶ In recent years over 70% of our product features have been updated with the environmental needs of our customers in mind
- ▶ Our technology is ROHS and REACH compliant and over 95% recyclable
- ▶ Our products are 100% quality tested by experts

