



# Electrolux

## Modular Cooking Range Line 900XP Gas Bratt Pan 100lt with mild steel bottom, auto tilting

ITEM # \_\_\_\_\_  
MODEL # \_\_\_\_\_  
NAME # \_\_\_\_\_  
SIS # \_\_\_\_\_  
AIA # \_\_\_\_\_



### Modular Cooking Range Line

900XP Gas Bratt Pan 100lt with mild steel  
bottom, auto tilting

**391139 (E9BRGJMPFM)**

100-lt gas automatic tilting  
braising pan with mild steel  
cooking surface,  
thermostatic control

### Short Form Specification

#### Item No. \_\_\_\_\_

Suitable for natural gas or LPG. Burners in AISI 441 with flame failure device. Polished mild steel plated cooking surface for roasting, browning, stewing, preparation of sauces, sautéing, boiling and braising. To be installed on stainless steel feet with height adjustment up to 50 mm and can be installed on cantilever systems. Includes mechanism to automatically tilt the pan and double-skinned lid in stainless steel. Cooking temperature can be set through thermostat and the energy input through an energy regulator. Exterior panels of unit in stainless steel with Scotch Brite finish. Right-angled side edges to allow flush-fitting junction between units.

### Main Features

- Double-skin well and lid to reduce heat dispersion.
- Lid is double-lined, insulated in 20/10 Stainless steel.
- IPX5 water resistance certification.
- Actual cooking temperature setting through adjustable thermostat.
- Working temperature can be set from 120 °C to 300 °C.
- Energy input controlled by energy regulator.
- Heat-insulated: limited heat radiation and low energy consumption.
- Automatic tilting mechanism to facilitate pan emptying.
- Smooth large surfaces, easy access for cleaning.
- The special design of the control knob system guarantees against water infiltration.
- Unit to be mounted on stainless steel feet with height adjustment up to 50 mm. Unit can be easily mounted on cantilever systems.

### Construction

- Cooking surface in mild steel for sautéing, poaching, steaming, boiling, stewing and regular frying.
- All pan internal surfaces round and polished for better hygiene.
- All exterior panels in Stainless Steel with Scotch Brite finishing.
- Model has right-angled side edges to allow flush fitting joints between units, eliminating gaps and possible dirt traps.
- Burners in AISI 441 against corrosion and thanks to a high strength yield, are resistant to high temperature.

### Optional Accessories

- Draught diverter, 150 mm diameter PNC 206132 ☐
- Matching ring for flue condenser, 150 mm diameter PNC 206133 ☐
- Flanged feet kit PNC 206136 ☐
- Frontal kicking strip for concrete installation, 1000mm PNC 206150 ☐
- Frontal kicking strip for concrete installation, 1200mm PNC 206151 ☐

APPROVAL: \_\_\_\_\_



Electrolux

900XP Gas Bratt Pan 100lt with mild steel bottom, auto tilting  
Modular Cooking Range Line



# Electrolux

## Modular Cooking Range Line 900XP Gas Bratt Pan 100lt with mild steel bottom, auto tilting

- Frontal kicking strip for concrete installation, 1600mm ☐ PNC 206152
- Frontal kicking strip, 1000mm (not for refr-freezer base) ☐ PNC 206177
- Frontal kicking strip, 1200mm (not for refr-freezer base) ☐ PNC 206178
- Frontal kicking strip, 1600mm (not for refr-freezer base) ☐ PNC 206179
- Pair of side kicking strips (not for refr-freezer base) ☐ PNC 206180
- 2 panels for service duct for single installation ☐ PNC 206181
- 2 panels for service duct for back to back installation ☐ PNC 206202
- Kit 4 feet for concrete installation (not for 900 line free standing grill) ☐ PNC 206210
- Chimney upstand, 1000mm ☐ PNC 206305
- Base support for feet or wheels - 1200mm (700/900) ☐ PNC 206368
- Base support for feet or wheels - 1600mm (700/900) ☐ PNC 206369
- Base support for feet or wheels - 2000mm (700/900) ☐ PNC 206370
- Rear paneling - 1000mm (700/900) ☐ PNC 206375
- Rear paneling - 1200mm (700/900) ☐ PNC 206376
- Chimney grid net, 200mm (700XP/900) ☐ PNC 206399
- Chimney grid net, 400mm (700XP/900) ☐ PNC 206400
- Trolley with lifting & removable tank ☐ PNC 922403
- Pressure regulator for gas units ☐ PNC 927225

Modular Cooking Range Line  
900XP Gas Bratt Pan 100lt with mild steel bottom, auto tilting

The company reserves the right to make modifications to the products without prior notice. All information correct at time of printing.

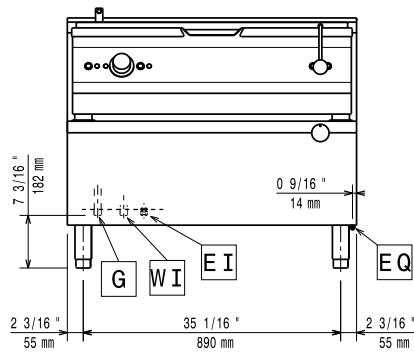
2017.06.23



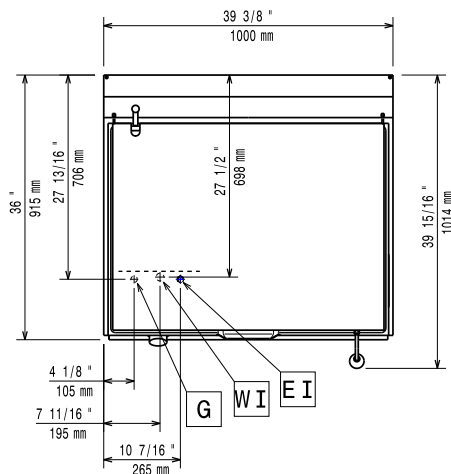
# Electrolux

## Modular Cooking Range Line 900XP Gas Bratt Pan 100lt with mild steel bottom, auto tilting

Front

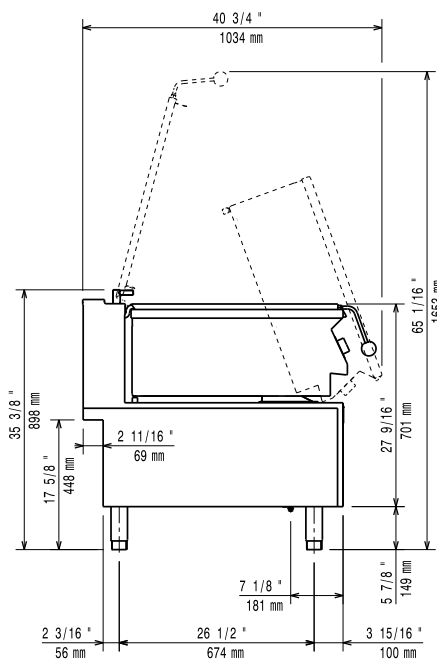


Top



CWI1 = Cold Water inlet 1  
EI = Electrical inlet (power)  
G = Gas connection

Side



### Electric

Supply voltage:

391139 (E9BRGJMPFM)

220-230 V/1 ph/50 Hz

Total Watts:

0.1 kW

### Gas

Gas Power:

92043 Btu/hr (27 kW)

Standard gas delivery:

Natural Gas G20 (20mbar)

Gas Type Option:

LPG; Natural Gas

Gas Inlet:

1/2"

### Key Information:

Cooking Surface Depth: 565 mm

Cooking Surface Width: 880 mm

Cooking Well Height: 130 mm

Well Capacity, Max: 100 lt

Usable capacity of the well 50 liters.

Working Temperature MIN: 120 °C

Working Temperature MAX: 300 °C

Net weight: 180 kg

Shipping weight: 200 kg

Shipping height: 1040 mm

Shipping width: 1020 mm

Shipping depth: 1100 mm

Shipping volume: 1.17 m<sup>3</sup>

No clearance needed on rear sides of unit if wall is of non combustible type. If wall is combustible, minimum 50 mm wall clearance should be maintained.

Modular Cooking Range Line  
900XP Gas Bratt Pan 100lt with mild steel bottom, auto tilting

The company reserves the right to make modifications to the products without prior notice. All information correct at time of printing.

2017.06.23