



# Electrolux

## Modular Cooking Range Line 700XP Two Wells Freestanding Electric Fryer 14 liter

ITEM # \_\_\_\_\_  
MODEL # \_\_\_\_\_  
NAME # \_\_\_\_\_  
SIS # \_\_\_\_\_  
AIA # \_\_\_\_\_



Modular Cooking Range Line

700XP Two Wells Freestanding Electric Fryer 14 liter

**371085 (E7FREH2FF0)**

14\*14-lt electric fryer free standing with 2 wells and 2 baskets, internal heating elements

**371144 (E7FREH2FFN)**

14\*14-lt electric fryer free standing with 2 wells and 2 baskets, internal heating elements

### Short Form Specification

#### Item No.

To be installed on height adjustable feet in stainless steel. High efficiency tilting incoloy armoured heating elements (17.4kW) placed inside the wells. Deep drawn wells. Oil drains through a tap into a container under the well. Exterior panels in stainless steel with Scotch Brite finish. One piece pressed work top in 1.5 mm thick stainless steel. Right-angled side edges to allow flush-fitting junction between units.

### Main Features

- Unit to be mounted on height adjustable feet in stainless steel.
- Thermostatic regulation of oil temperature up to a maximum of 185 °C.
- Overheat protection thermostat as standard on all units.
- Oil drains through a tap into a drainage container positioned under the well.
- All major compartments located in front of unit for ease of maintenance.
- IPX 4 water protection.
- Incoloy armoured heating elements located inside the well can be lifted up for easier cleaning.

### Construction

- Interior of well with rounded corners for ease of cleaning.
- All exterior panels in Stainless Steel with Scotch Brite finishing.
- One piece pressed 1.5 mm work top in Stainless steel.
- Model has right-angled side edges to allow flush fitting joints between units, eliminating gaps and possible dirt traps.

### Included Accessories

- 2 of Door for open base cupboard PNC 206350
- 2 of Full size basket for 14 and 15lt free standing fryers PNC 921691

### Optional Accessories

- Kit 4 wheels - 2 swivelling with brake - it is mandatory to install base support and wheels PNC 206135 ☐
- Flanged feet kit PNC 206136 ☐
- Frontal kicking strip for concrete installation, 200mm PNC 206146 ☐
- Frontal kicking strip for concrete installation, 400mm PNC 206147 ☐
- Frontal kicking strip for concrete installation, 800mm PNC 206148 ☐
- Frontal kicking strip for concrete installation, 1000mm PNC 206150 ☐
- Frontal kicking strip for concrete installation, 1200mm PNC 206151 ☐
- Frontal kicking strip for concrete installation, 1600mm PNC 206152 ☐
- Frontal kicking strip, 200mm (not for refr-freezer base) PNC 206174 ☐
- Frontal kicking strip, 400mm (not for refr-freezer base) PNC 206175 ☐

APPROVAL: \_\_\_\_\_



Electrolux

Modular Cooking Range Line  
700XP Two Wells Freestanding Electric Fryer 14 liter

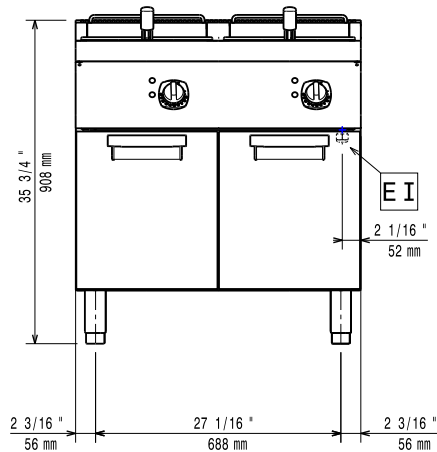
- Frontal kicking strip, 800mm (not for refr-freezer base) PNC 206176  
☐
- Frontal kicking strip, 1000mm (not for refr-freezer base) PNC 206177  
☐
- Frontal kicking strip, 1200mm (not for refr-freezer base) PNC 206178  
☐
- Frontal kicking strip, 1600mm (not for refr-freezer base) PNC 206179  
☐
- Kit 4 feet for concrete installation (not for 900 line free standing grill) PNC 206210  
☐
- Pair of side kicking strips PNC 206249  
☐
- Pair of side kicking strips for concrete installation PNC 206265  
☐
- Oil drain pipe for 15lt free standing fryer PNC 206301  
☐
- Chimney upstand, 800mm PNC 206304  
☐
- Right and left side handrails PNC 206307  
☐
- Door for open base cupboard PNC 206350  
☐
- Base support for feet or wheels - 400mm (700/900) PNC 206366  
☐
- Base support for feet or wheels - 800mm (700/900) PNC 206367  
☐
- Base support for feet or wheels - 1200mm (700/900) PNC 206368  
☐
- Base support for feet or wheels - 1600mm (700/900) PNC 206369  
☐
- Base support for feet or wheels - 2000mm (700/900) PNC 206370  
☐
- Rear paneling - 800mm (700/900) PNC 206374  
☐
- Rear paneling - 1000mm (700/900) PNC 206375  
☐
- Rear paneling - 1200mm (700/900) PNC 206376  
☐
- Chimney grid net, 400mm (700XP/900) PNC 206400  
☐
- 2 side covering panels for free standing appliances PNC 216000  
☐
- Frontal handrail, 800mm PNC 216047  
☐
- Frontal handrail, 1200mm PNC 216049  
☐
- Frontal handrail, 1600mm PNC 216050  
☐
- Large handrail - portioning shelf, 400mm PNC 216185  
☐
- Large handrail - portioning shelf, 800mm PNC 216186  
☐
- Full size basket for 14 and 15lt free standing fryers PNC 921691  
☐
- 2 half size baskets for 12, 14 and 15lt fryers PNC 921692  
☐
- Filter for fryer oil collection basin for 7lt, 14lt, 15lt free standing fryers PNC 921693  
☐



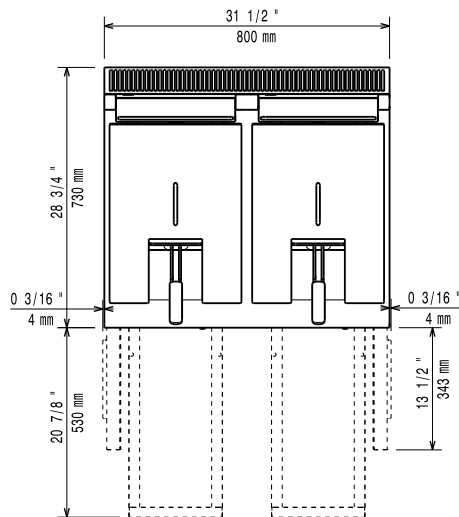
# Electrolux

## Modular Cooking Range Line 700XP Two Wells Freestanding Electric Fryer 14 liter

Front

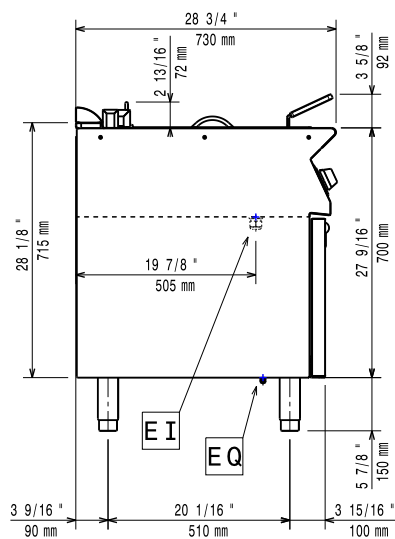


Top



EI = Electrical connection  
EQ = Equipotential screw

Side



### Electric

#### Supply voltage:

371085 (E7FREH2FF0)	400 V/3N ph/50/60 Hz
371144 (E7FREH2FFN)	230 V/3 ph/50/60 Hz

#### Total Watts:

17.4 kW

### Key Information:

#### Usable well dimensions (width):

240 mm

#### Usable well dimensions (height):

285 mm

#### Usable well dimensions (depth):

380 mm

#### Well capacity:

12 lt MIN; 14 lt MAX

#### Thermostat Range:

105 °C MIN; 185 °C MAX

#### Net weight:

81 kg

#### Shipping weight:

371085 (E7FREH2FF0)	90 kg
371144 (E7FREH2FFN)	101 kg

#### Shipping height:

1140 mm

#### Shipping width:

820 mm

#### Shipping depth:

860 mm

#### Shipping volume:

0.8 m<sup>3</sup>

If appliance is set up or next to or against temperature sensitive furniture or similar, a safety gap of approximately 150 mm should be maintained or some form of heat insulation fitted.



Modular Cooking Range Line  
700XP Two Wells Freestanding Electric Fryer 14 liter

The company reserves the right to make modifications to the products without prior notice. All information correct at time of printing.

2016.11.03