



Electrolux

air-o-chill air-o-chill Blast Chiller/Shock Freezer 202 - 400lbs (180kg)

ITEM #

MODEL #

NAME #

SIS #

AIA #



air-o-chill

air-o-chill Blast Chiller/Shock Freezer 202 -
400lbs (180kg)

726641 (AOF20218RU)

Blast Chiller/Shock Freezer
202 - 208V/3p/60Hz
(remote required)

Short Form Specification

Item No.

Unit to be Electrolux air-o-chill® Blast Chiller/Shock Freezer Soft-chilling, Hard-chilling and Blastfreezing cycles. At the end of each Blast-chilling- or freezing cycle the unit shall automatically activate a holding cycle. Defrost cycle is automatically and intelligently activated: ice build up on evaporator is automatically detected and defrost activated to maximize performance efficiency. Manual activation of defrost cycle is possible. Unit does not have any heat limitation and can accept food directly from oven at cooking temperature. The unit features both time and core temperature controlled chilling cycles. One core temperature probe is provided as standard, up to three are available.

Covered by Electrolux Platinum Star® Service Program two-year parts and one-year labor warranty, installation start-up and performance checkup after one year from installation.



APPROVAL:

Main Features

- BlastChiller/Shock Freezer designed to accept hot product directly from the oven, no need to reduce food temperature below 160° F (70° C) before starting the chilling/freezing cycle.
- Soft Chilling: air temperature -28 °F (-2°C).
- Hard Chilling (air temperature -4 °F or (-20°C).
- Blast/Shock Freezing cycle: 55 lbs. (25kg) from 194 °F (90°C) up to -40 °F (-18°C) in less that four hours. Blast/Shock Freezing: low air temperature adjustable up to -42 °F (-41°C).
- Automatic Holding cycle: automatically activated at the end of each cycle to save energy and maintain the target temperature (manual activation is also possible): chilling at 37 °F (3°C) and freezing at -8 °F (-22°C).
- Turbo cooling (PATENTED): chiller works continuously at the desired temperature; ideal for continuous production.
- Cruise cycle (PATENTED): the chiller automatically sets the parameters for the quickes and best chilling (it works by probe).
- Two specialized cycles:
P1 brings down ice-cream temperature to -14°C (measured at the core when probe is inserted). Once set temperature is reached, the temporary maintenance phase automatically begins, holding the -14°C temperature.
P2 sets temperature to -36°C / -40°C for an indefinite amount of time, maintaining the ventilation active. Temperature is adjustable up to -40°C without interrupting the cycle, allowing ice-cream to be kept longer in the freezer.
- 3-sensor core probe as standard and automatic detection of the core probe insertion.
- Probe-driven cycles feature ARTE (Algorithm for Remaining Time Estimation) to make planning the activities easier.
- Control unit provides two large displays to read out: time, core temperature, cycle countdown, alarms, service information.
- Control unit provides several operating settings (programmable parameters): time/core temperature according to NF and UK regulations, time/air temperature/probe personalized according to national regulations, sterilizing cycle: UV lamps built-in (on request), 3 single sensor or 3-sensor temperature probes (as accessory), ideal for meats, automatic defrosting and manual defrosting.
- Audible alarms and visual indicators for food safety (HACCP) issues and separate audible and visual for unit malfunctions.
- On-board HACCP monitoring capable.
- All information related to the different operating models are recorded: date, time, cycle, core temperature, holding temperature, HACCP accordance.
- Chilling and freezing times can vary according to food quantity, density, moisture contents and type of containers. Chilling capacity according to NF regulations is 18 kg.



Electrolux

air-o-chill Blast Chiller/Shock Freezer 202 - 400lbs (180kg)

Electrolux Professional, Inc.

www.electroluxusa.com/professional

10200 David Taylor Drive, Charlotte, NC 28262 • Telephone Number: 866-449-4200 • Fax Number: 704-547-7401

- Performance guaranteed at ambient temperatures of 90° F (+32° C).
- Automatic and manual electric defrosting.

Construction

- Thermostatic expansion valve to optimize the cooling unit efficiency.
- Waste water can be plumbed into drain, but can also be collected in an optional waste container.
- Main components in 304 AISI stainless steel.
- Solenoid valve included.
- Requires remote refrigeration connection.
- Developed and produced in ISO 9001 and ISO 14001 certified factory.
- Evaporator with antirust protection.
- Motors and fan waterproof protected IP23.
- PC connection on request, gate RS 485.
- No water connections required.
- Stand alone printer as accessory.
- Inner cell with fully rounded corners.
- High density polyurethane insulation, 60 mm tickness, HCFC free.
- Environmentally friendly: R404a as refrigerant fluid.
- Removable magnetic gasket door with hygienic design.
- Ventilator swinging hinged panel for access to the evaporator for cleaning.
- Automatic heated door frame.

Included Accessories

- 1 of (1) 3-sensor probe, for blast chiller/freezers all sizes PNC 880212

Optional Accessories

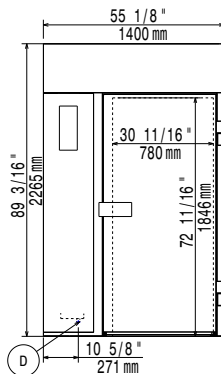
- External printer for HACCP PNC 880048 ☐
- Electronic Board for HACCP through PC Network, for Air-O-Chill Blast Chillers PNC 880183 ☐
- (1) 3-sensor probe, for blast chiller/freezers all sizes PNC 880212 ☐
- (1) single sensor probe, for blast chiller/freezers PNC 880213 ☐
- - NOT TRANSLATED - PNC 880215 ☐
- Trolley tray rack (10), for 202 oven (standard pitch) PNC 922044 ☐
- Trolley tray rack (8), for 202 oven (increased pitch) PNC 922046 ☐
- 92 plate rack for 202 (plate diameter up to 12 1/4") PNC 922055 ☐
- Pair of 304 stainless steel full-size grid (21 "x26") PNC 922060 ☐
- Pastry Trolley (400mm x 600mm) for 20 Full-size sheet pans air-o-system PNC 922069 ☐
- Single 304 stainless steel full-size grid (21 "x26") PNC 922076 ☐
- HANDLE + WHEELS KIT FOR TRAY RACK PNC 922352 ☐



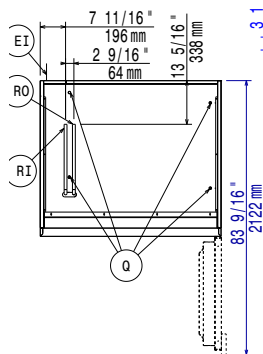
Electrolux

air-o-chill air-o-chill Blast Chiller/Shock Freezer 202 - 400lbs (180kg)

Front



Top

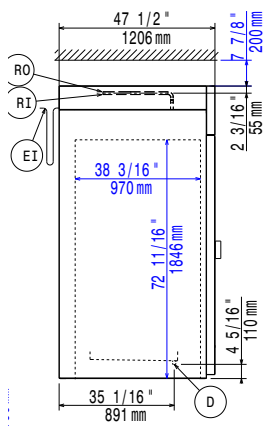


D = Drain

EI = Electrical connection

RO = Refrigerant Outlet

Side



Electric

Supply voltage:

726641 (AOF20218RU) 208 V/3 ph/60 Hz

Electrical power:

2.7 kW

Circuit breaker required

Maximum Over-Current

Protection (MOP):

20A

Minimum Circuit Ampacity

29A

Installation:

Clearance:

2" (5cm) on sides and back.

Please see and follow detailed installation instructions provided with the unit

Capacity:

Sheet pans:

20 - 18"x 26"

Steam pans:

40 - 12"x 20"

Max load capacity:

397lbs (180kg)

Max load capacity:

47.5gal (180lt)

Key Information:

N° of doors:

1

External dimensions, Width: 55 1/8" (1400 mm)

External dimensions, Depth: 47 1/2" (1206 mm)

External dimensions, Height: 89 3/16" (2265 mm)

Shipping width: 53 15/16" (1370 mm)

Shipping depth: 59 1/16" (1500 mm)

Shipping height: 96 7/8" (2460 mm)

Shipping weight: 1032 lbs (468 kg)

Shipping volume: 178.51 ft³ (5.06 m³)

Internal Dimensions (depth): 37" (946mm)

Internal Dimensions (height): 73" (1850mm)

Internal Dimensions (width): 30" (752mm)

Net Weight: 877lbs (398kg)

Refrigeration Data

Refrigerant type:

R404a

Requires remote refrigeration: (not included) 7.5 hp (25.5 kW, 38,000 BTU), Suction T at -20 °F, Ambient T at 90 °F.

air-o-chill
air-o-chill Blast Chiller/Shock Freezer 202 - 400lbs (180kg)

The company reserves the right to make modifications to the products without prior notice. All information correct at time of printing.

2016.05.24