



Electrolux

Modular Cooking Range Line 700XP Freestanding Gas Boiling Pan 60lt indirect heat (60HZ)

ITEM # _____
MODEL # _____
NAME # _____
SIS # _____
AIA # _____



Modular Cooking Range Line

700XP Freestanding Gas Boiling Pan 60lt
indirect heat (60HZ)

371274 (E7BSGHIN4)

60-lt indirect gas boiling
pan

Short Form Specification

Item No.

To be installed on height adjustable feet in stainless steel. Suitable for natural gas or LPG. Robust burners in stainless steel with flame failure device and protected pilot light. Temperature is controlled by a power regulator; heating elements with temperature limiter. Exterior panels in stainless steel with Scotch Brite finish. One piece pressed work top in 1.5 mm thick stainless steel. Right-angled side edges to allow flush-fitting junction between units.

Main Features

- Kettle is suitable to cook, sauté or poach all kinds of produce.
- Produce is uniformly heated in the base and side walls of the kettle by an indirect heating system that uses integrally generated saturated steam at a temperature of 110° C in the jacket.
- Pressed cooking vessel and lid in 316 AISI Stainless steel.
- Robust burners in stainless steel with flame failure device, protected pilot light and optimized combustion.
- External valve allows to manually evacuate excess air accumulated in the jacket during heating phase.
- Appliance is IPX4 water resistance certified.
- Solenoid valve to refill with hot and cold water.
- Safety valve avoids overpressure of the steam in the jacket.
- No overshooting of cooking temperatures, fast reaction.
- Large capacity drain tap enables precise portioning of the discharged food, especially small quantities.
- Firmly fitting cover to reduce cooking time and save energy costs.
- Ergonomic: unique ratio vessel diameter and height; depth facilitates stirring and gentle food handling.
- Discharge tube and tap are very easy to clean from outside.
- Smooth large surfaces, easy access for cleaning.
- Pressure switch control monitors energy and water consumption.
- Exterior panels in Stainless Steel with Scotch Brite finish.
- One piece pressed 1.5 mm work top in Stainless steel.
- Model has right-angled side edges to allow flush fitting joints between units, eliminating gaps and possible dirt traps.
- Unit delivered with four 50 mm legs in stainless steel as standard (all round Stainless steel kick plates as option).

Optional Accessories

- | | |
|---|--------------------------|
| • Junction sealing kit | PNC 206086 |
| | <input type="checkbox"/> |
| • Draught diverter, 150 mm diameter | PNC 206132 |
| | <input type="checkbox"/> |
| • Matching ring for flue condenser, 150 mm diameter | PNC 206133 |
| | <input type="checkbox"/> |
| • Kit 4 wheels - 2 swivelling with brake - it is mandatory to install base support and wheels | PNC 206135 |
| | <input type="checkbox"/> |
| • Flanged feet kit | PNC 206136 |
| | <input type="checkbox"/> |
| • Frontal kicking strip for concrete installation, 400mm | PNC 206147 |
| | <input type="checkbox"/> |
| • Frontal kicking strip for concrete installation, 800mm | PNC 206148 |
| | <input type="checkbox"/> |

APPROVAL: _____



Electrolux

Modular Cooking Range Line
700XP Freestanding Gas Boiling Pan 60lt indirect heat (60HZ)

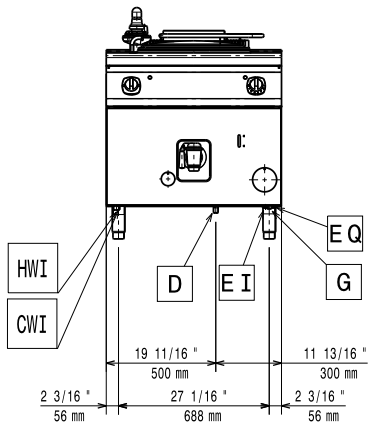
• Frontal kicking strip for concrete installation, 1000mm	PNC 206150 <input type="checkbox"/>
• Frontal kicking strip for concrete installation, 1200mm	PNC 206151 <input type="checkbox"/>
• Frontal kicking strip for concrete installation, 1600mm	PNC 206152 <input type="checkbox"/>
• Frontal kicking strip, 800mm (not for refr-freezer base)	PNC 206176 <input type="checkbox"/>
• Frontal kicking strip, 1000mm (not for refr-freezer base)	PNC 206177 <input type="checkbox"/>
• Frontal kicking strip, 1200mm (not for refr-freezer base)	PNC 206178 <input type="checkbox"/>
• Frontal kicking strip, 1600mm (not for refr-freezer base)	PNC 206179 <input type="checkbox"/>
• Kit 4 feet for concrete installation (not for 900 line free standing grill)	PNC 206210 <input type="checkbox"/>
• Flue condenser for 1 module, 150 mm diameter	PNC 206246 <input type="checkbox"/>
• Pair of side kicking strips	PNC 206249 <input type="checkbox"/>
• Pair of side kicking strips for concrete installation	PNC 206265 <input type="checkbox"/>
• Chimney upstand, 800mm	PNC 206304 <input type="checkbox"/>
• Right and left side handrails	PNC 206307 <input type="checkbox"/>
• Back handrail 800mm, Marine	PNC 206308 <input type="checkbox"/>
• Base support for feet or wheels - 400mm (700/900)	PNC 206366 <input type="checkbox"/>
• Base support for feet or wheels - 800mm (700/900)	PNC 206367 <input type="checkbox"/>
• Base support for feet or wheels - 1200mm (700/900)	PNC 206368 <input type="checkbox"/>
• Base support for feet or wheels - 1600mm (700/900)	PNC 206369 <input type="checkbox"/>
• Base support for feet or wheels - 2000mm (700/900)	PNC 206370 <input type="checkbox"/>
• Rear paneling - 800mm (700/900)	PNC 206374 <input type="checkbox"/>
• Rear paneling - 1000mm (700/900)	PNC 206375 <input type="checkbox"/>
• Rear paneling - 1200mm (700/900)	PNC 206376 <input type="checkbox"/>
• 2 side covering panels for free standing appliances	PNC 216000 <input type="checkbox"/>
• Frontal handrail, 800mm	PNC 216047 <input type="checkbox"/>
• Frontal handrail, 1200mm	PNC 216049 <input type="checkbox"/>
• Large handrail - portioning shelf, 800mm	PNC 216186 <input type="checkbox"/>
• 1-section noodle basket for 60lt boiling pans	PNC 921626 <input type="checkbox"/>
• Trolley with lifting & removable tank	PNC 922403 <input type="checkbox"/>
• Pressure regulator for gas units	PNC 927225 <input type="checkbox"/>



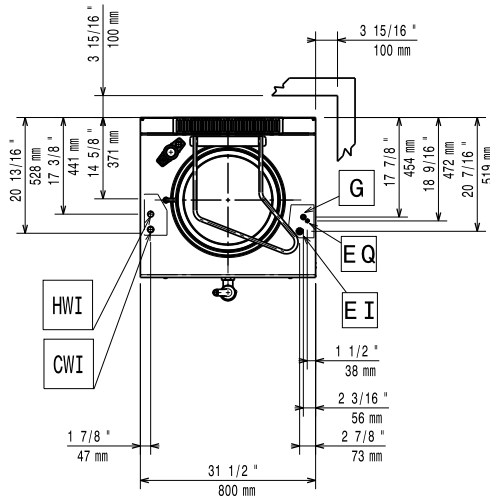
Electrolux

Modular Cooking Range Line 700XP Freestanding Gas Boiling Pan 60lt indirect heat (60HZ)

Front

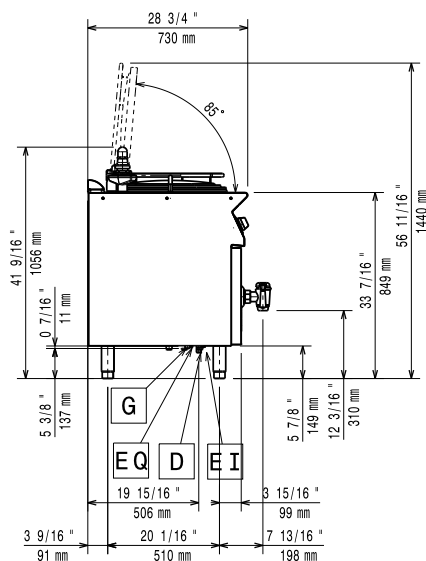


Top



- CWI = Cold Water inlet
 D = Drain
 EI = Electrical inlet (power)
 G = Gas connection
 HWI = Hot water inlet

Side



Electric

Supply voltage:

371274 (E7BSGHIN4)

230 V/1N ph/60 Hz

Total Watts:

0.1 kW

Gas

Gas Power:

47726 Btu/hr (14 kW)

Standard gas delivery:

Natural Gas G20 (20mbar)

Gas Type Option:

LPG

Gas Inlet:

1/2"

Key Information:

Pan useful capacity:

60 lt

Vessel (round) diameter:

420 mm

Net weight:

100 kg

Shipping weight:

115 kg

Shipping height:

1140 mm

Shipping width:

900 mm

Shipping depth:

820 mm

Shipping volume:

0.84 m³

No clearance needed on rear sides of unit if wall is of non combustible type. If wall is combustible, minimum 50 mm wall clearance should be maintained.

Modular Cooking Range Line
700XP Freestanding Gas Boiling Pan 60lt indirect heat (60HZ)

The company reserves the right to make modifications to the products without prior notice. All information correct at time of printing.

2017.06.23